



Soccer Box Score (Final)

NCHSAA 1A Women's Soccer State Championship

Woods Charter School Wolves vs Summit Charter Academy Bears (5/28/2026 at Durham, NC)

Woods Charter School Wolves (23-0-0) vs.
Summit Charter Academy Bears (18-2-1)
Date: 5/28/2026 • Attendance: 752

Goals by period	1	2	Total
WCS	1	2	3
SCA	0	0	0

Woods Charter School Wolves

Pos ##	Player	Sh	SO	G	A	Fo	Min
def 6	Paige Apolito	-	-	-	-	-	25
def 7	Wesley Oliver	-	-	-	-	3	80
mid 9	Kori Myers	-	-	-	-	1	67
def 10	Valentina Podolyanskaya	-	-	-	-	-	80
mid 14	Eve Terrell	-	-	-	-	-	80
mid 15	Leah Marshall	2	1	-	-	-	62
fwd 20	Avery Wesololoski	3	3	-	-	-	80
mid 21	Lorelai Cherry	2	1	-	-	-	64
mid 22	Lucy Poitras	7	5	3	-	-	71
str 23	Annabel Unah	3	1	-	1	-	80
gk 50	Grace Wilson	-	-	-	-	-	80
-- Substitutes --							
16	Maya Hinkle	-	-	-	-	1	68
17	Eliza Blanchard	1	-	-	-	1	43
Totals		18	11	3	1	6	

Summit Charter Academy Bears

Pos ##	Player	Sh	SO	G	A	Fo	Min
gk 00	Olivia Reeves	-	-	-	-	-	80
mid 2	Nikol Placko	1	1	-	-	-	62
str 6	Victoria Clement	7	4	-	-	2	80
mid 10	Zoe Zimmer	-	-	-	-	1	56
def 11	Jaylin Wells	-	-	-	-	-	71
def 13	Lydia Hughes	-	-	-	-	-	67
mid 15	Navaeh Birchmore	-	-	-	-	-	68
str 18	Kayleigh Bonner	5	1	-	-	1	80
def 20	Rae Bennett	-	-	-	-	-	80
mid 22	Sydney Sinclair	1	-	-	-	1	75
mid 24	Bailey Robinson	1	-	-	-	-	78
-- Substitutes --							
17	Liz Campbell	-	-	-	-	1	32
21	Campbell Bonner	-	-	-	-	-	37
28	Ava Wike	-	-	-	-	-	14
Totals		15	6	-	-	6	

##	Goalkeepers	Dec	Min	GA	Saves
50	Grace Wilson	W	80:00	0	6

##	Goalkeepers	Dec	Min	GA	Saves
00	Olivia Reeves	L	80:00	3	8

Win-Wilson, Grace (1-0-0). Loss-Reeves, Olivia (0-1-0).

Shots by period	1	2	Total
WCS	6	12	18
SCA	6	9	15

Saves by period	1	2	Total
WCS	2	4	6
SCA	1	7	8

Corner kicks	1	2	Total
WCS	1	2	3
SCA	3	3	6

Fouls	1	2	Total
WCS	2	4	6
SCA	4	2	6

Scoring summary:

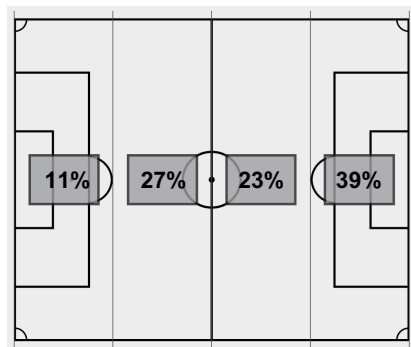
No.	Time	Team	Goal scorer	Assist	Description
1.	28:40	WCS	Lucy Poitras (1)	(unassisted)	
2.	42:54	WCS	Lucy Poitras (2)	(unassisted)	
3.	64:51	WCS	Lucy Poitras (3)	Annabel Unah	

Cautions and ejections:

Stadium: Durham County Memorial Stadium

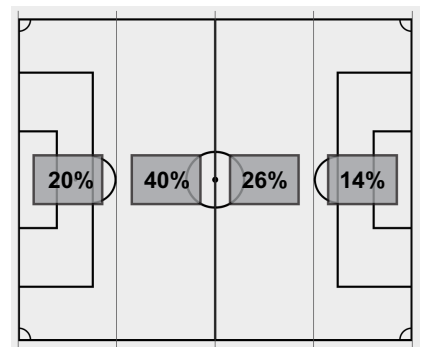
Officials:

Offsides: Woods Charter School Wolves 0, Summit Charter Academy Bears 1.



Attacking Direction →

18	TOTAL SHOTS	15
11	SHOTS ON TARGET	6
6	SAVES	8
3	CORNERS	6
0	OFFSIDES	1
0	YELLOW CARDS	0
0	RED CARDS	0
53%	POSSESSION TOTAL	47%



← Attacking Direction

Official's signature