



Officials: Jeremy Gay, Shayne Jones, Daniel Brinkley

Wakefield - 31

Record: 26-3

NO.	Name	Min	FG	3P	FT	Rebounds			Fouls		TP	AS	TO	ST	Blocks		+/-
			M-A	M-A	M-A	OR	DR	TOT	PF	FD					BS	BA	
2	Lyla Bagwell	29:27	2-4	2-4	3-6	1	3	4	2	3	9	2	2	0	0	0	9
3	Nicole Amend	26:25	0-3	0-1	2-2	2	3	5	0	1	2	0	1	0	1	0	11
10	Jaya Hamilton	28:45	2-8	0-1	2-2	1	2	3	2	2	6	0	1	1	0	1	6
22	Maddison McIntyre	22:58	2-3	0-0	0-4	0	4	4	4	6	4	2	5	2	0	0	5
24	Aly Schaffer	26:26	2-8	2-8	0-0	0	1	1	1	0	6	1	1	0	0	0	2
1	Sydney Conti	17:04	1-2	0-1	0-0	0	2	2	0	1	2	2	2	1	0	0	3
5	Heaven Briggs	08:56	1-1	0-0	0-0	0	1	1	1	1	2	1	2	0	0	0	4
Team						0	5	5			0		0				
<b>Totals</b>			10-29	4-15	7-14	4	21	25	10	14	31	8	14	4	1	1	8

Technical Fouls: NONE

Shooting By Period		
1 <sup>st</sup> FG%	2-9	22.2%
3PT%	1-6	16.7%
FT%	2-2	100%
2 <sup>nd</sup> FG%	3-5	60.0%
3PT%	1-2	50.0%
FT%	0-0	0%
3 <sup>rd</sup> FG%	1-6	16.7%
3PT%	1-5	20.0%
FT%	0-4	0%
4 <sup>th</sup> FG%	4-9	44.4%
3PT%	1-2	50.0%
FT%	5-8	62.5%
GMFG%	10-29	34.5%
3PT%	4-15	26.7%
FT%	7-14	50.0%

Dead Ball Rebounds: 5, 1

Hoggard - 23

Record: 30-2

NO.	Name	Min	FG	3P	FT	Rebounds			Fouls		TP	AS	TO	ST	Blocks		+/-
			M-A	M-A	M-A	OR	DR	TOT	PF	FD					BS	BA	
13	Kicey Gardner	22:20	0-4	0-2	0-0	0	0	0	3	0	0	0	6	0	0	1	-11
14	Tristan Shivers	32:00	6-17	0-4	2-2	2	3	5	3	4	14	1	6	4	0	0	-8
23	Avery Fitzgerald	32:00	0-6	0-4	0-0	1	5	6	3	1	0	0	1	0	1	0	-8
32	AK Chance	32:00	2-6	2-5	0-0	0	3	3	3	1	6	0	1	1	0	0	-8
44	Emmy Seward	10:39	0-0	0-0	0-0	0	0	0	0	0	0	0	0	1	0	0	-1
10	Airlie Altman	08:17	0-2	0-0	0-0	1	2	3	1	2	0	0	0	0	0	0	2
33	Ella Jones	22:44	1-5	0-3	1-2	5	1	6	1	2	3	1	1	0	0	0	-6
Team						0	1	1			0		0				
<b>Totals</b>			9-40	2-18	3-4	9	15	24	14	10	23	2	15	6	1	1	-8

Technical Fouls: NONE

Shooting By Period		
1 <sup>st</sup> FG%	3-12	25.0%
3PT%	1-4	25.0%
FT%	1-1	100%
2 <sup>nd</sup> FG%	2-12	16.7%
3PT%	1-9	11.1%
FT%	0-0	0%
3 <sup>rd</sup> FG%	3-10	30.0%
3PT%	0-1	0.0%
FT%	2-3	66.7%
4 <sup>th</sup> FG%	1-6	16.7%
3PT%	0-4	0.0%
FT%	0-0	0%
GMFG%	9-40	22.5%
3PT%	2-18	11.1%
FT%	3-4	75.0%

Dead Ball Rebounds: 1, 2

	WAKE	HOG
<b>Biggest lead</b>	8 (4 <sup>th</sup> 0:02)	4 (3 <sup>rd</sup> 0:03)
<b>Best Scoring Run</b>	7 (1 <sup>st</sup> 4:22)	5 (1 <sup>st</sup> 1:01)
<b>Lead Changes</b>	9	
<b>Times Tied</b>	3	
<b>Time with Lead</b>	14:51	12:13

	WAKE	HOG
<b>Points from</b>		
<b>Turnovers</b>	5	8
<b>Paint</b>	12	14
<b>Second Chance</b>	2	6
<b>Fast Breaks</b>	2	5
<b>Bench</b>	4	3

	Period by Period Scoring				
	1st	2nd	3rd	4th	TOT
<b>WAKE</b>	7	7	3	14	31
<b>HOG</b>	8	5	8	2	23



**Period 1**

**Period Starters:**

<b>HOG</b>	13 Gardner K	14 Shivers T	23 Fitzgerald A	32 Chance A	44 Seward E
<b>WAKE</b>	2 Bagwell L	3 Amend N	10 Hamilton J	22 McIntyre M	24 Schaffer A

Game Time	HOG	Score	Diff	WAKE
08:00	23 FITZGERALD A jumpball won			3 AMEND N jumpball lost
07:32	13 GARDNER K 2pt FG in the paint, layup missed			
07:21				22 MCINTYRE M defensive rebound (1)
06:47				3 AMEND N 3pt FG , jump shot missed
06:41	23 FITZGERALD A defensive rebound (1)			
06:38	32 CHANCE A foul drawn (1)			22 MCINTYRE M foul personal (1 - 1)
06:30	13 GARDNER K 3pt FG , jump shot missed			
06:27				24 SCHAFFER A defensive rebound (1)
06:27	jump ball situation			
06:11				10 HAMILTON J 3pt FG , jump shot missed
06:06				2 BAGWELL L offensive rebound (1)
06:04				24 SCHAFFER A 3pt FG second chance, jump shot missed
05:59	32 CHANCE A defensive rebound (1)			
05:53	32 CHANCE A 3pt FG , jump shot made (3)	<b>3-0</b>	<b>3</b>	
05:53	14 SHIVERS T assist (1)			
05:30	23 FITZGERALD A foul shooting (1 - 1)			10 HAMILTON J foul drawn (1)
05:30		<b>3-1</b>	<b>2</b>	10 HAMILTON J free throw 1 - 2 made (1)
05:30		<b>3-2</b>	<b>1</b>	10 HAMILTON J free throw 2 - 2 made (2)
05:09	14 SHIVERS T 2pt FG outside the paint, jump shot missed			
05:03				22 MCINTYRE M defensive rebound (2)
04:58		<b>3-5</b>	<b>-2</b>	24 SCHAFFER A 3pt FG , jump shot made (3)
04:58				2 BAGWELL L assist (1)
04:52	Timeout 30 Sec			
04:44	14 SHIVERS T 2pt FG in the paint, layup missed			
04:40				3 AMEND N defensive rebound (1)
04:22		<b>3-7</b>	<b>-4</b>	10 HAMILTON J 2pt FG in the paint, jump shot made (4)
04:22				22 MCINTYRE M assist (1)
04:10	13 GARDNER K turnover travel (1)			
04:10	13 GARDNER K substitution out			
04:10	44 SEWARD E substitution out			
04:10	10 ALTMAN A substitution in			
04:10	33 JONES E substitution in			
03:55				24 SCHAFFER A 3pt FG from turnover, jump shot missed
03:49	10 ALTMAN A defensive rebound (1)			
03:38	14 SHIVERS T 2pt FG in the paint, layup made (2)	<b>5-7</b>	<b>-2</b>	
03:09				3 AMEND N turnover travel (1)
02:37	23 FITZGERALD A 3pt FG from turnover, jump shot missed			
02:31	10 ALTMAN A offensive rebound (2)			
02:27	33 JONES E 3pt FG from turnover second chance, jump shot missed			
02:21				22 MCINTYRE M defensive rebound (3)
02:21	14 SHIVERS T foul personal (1 - 2)			22 MCINTYRE M foul drawn (1)
02:21				3 AMEND N substitution out



Official Basketball PlaybyPlay - 1st Period  
**Wakefield at Hoggard**  
 03/12/25 LJVW, Winston-Salem, N.C.  
 NCHSAA-3

**Game Time:** 6:00 PM  
**Game Duration:** 1:19

**Officials:** Jeremy Gay, Shayne Jones, Daniel Brinkley

Game Time	HOG	Score	Diff	WAKE
02:21				1 CONTI S substitution in
02:07				10 HAMILTON J 2pt FG in the paint, layup missed
02:03	23 FITZGERALD A defensive rebound (2)			
01:57	14 SHIVERS T turnover bad pass (1)			
01:34				22 MCINTYRE M 2pt FG from turnover in the paint, jump shot missed
01:31	defensive rebound (6)			
01:31	23 FITZGERALD A foul drawn (1)			22 MCINTYRE M foul personal (2 - 2)
01:31				22 MCINTYRE M substitution out
01:31				5 BRIGGS H substitution in
01:24	23 FITZGERALD A 2pt FG in the paint, layup missed			
01:23	23 FITZGERALD A offensive rebound (3)			
01:23	jump ball situation			
01:01	14 SHIVERS T 2pt FG second chance in the paint, layup made (4)	7-7	0	
01:01	14 SHIVERS T foul drawn (1)			2 BAGWELL L foul shooting (1 - 3)
01:01				1 CONTI S substitution out
01:01				3 AMEND N substitution in
01:01	14 SHIVERS T free throw 1 - 1 made (5)	8-7	1	
00:47				5 BRIGGS H turnover travel (1)
00:22	33 JONES E 2pt FG from turnover outside the paint, jump shot missed			
00:15	33 JONES E offensive rebound (1)			
00:14	10 ALTMAN A 2pt FG from turnover second chance in the paint, layup missed			
00:11				10 HAMILTON J defensive rebound (1)
00:02				24 SCHAFFER A 3pt FG , jump shot missed
00:01				offensive dead ball rebound (1)
<b>END OF PERIOD</b>				
<b>HOG 8-7 WAKE</b>				



Officials: Jeremy Gay, Shayne Jones, Daniel Brinkley

**Wakefield - 7**

NO.	Name	Min	FG			Rebounds			Fouls		TP	AS	TO	ST	Blocks		+/-
			M-A	3P	FT	OR	DR	TOT	PF	FD					BS	BA	
2	Lyla Bagwell	08:00	0-0	0-0	0-0	1	0	1	1	0	0	1	0	0	0	0	-1
3	Nicole Amend	06:40	0-1	0-1	0-0	0	1	1	0	0	0	0	1	0	0	0	1
10	Jaya Hamilton	08:00	1-3	0-1	2-2	0	1	1	0	1	4	0	0	0	0	0	-1
22	Maddison McIntyre	06:29	0-1	0-0	0-0	0	3	3	2	1	0	1	0	0	0	0	2
24	Aly Schaffer	08:00	1-4	1-4	0-0	0	1	1	0	0	3	0	0	0	0	0	-1
1	Sydney Conti	01:20	0-0	0-0	0-0	0	0	0	0	0	0	0	0	0	0	0	-2
5	Heaven Briggs	01:31	0-0	0-0	0-0	0	0	0	0	0	0	0	1	0	0	0	-3
Team						0	0	0			0						
<b>Totals</b>			2-9	1-6	2-2	1	6	7	3	2	7	2	2	0	0	0	-1

Shooting By Period		
1st FG%	2-9	22.2%
3PT%	1-6	16.7%
FT%	2-2	100%
GMFG%	2-9	22.2%
3PT%	1-6	16.7%
FT%	2-2	100.0%

Dead Ball Rebounds: 1, 0

Technical Fouls: NONE

**Hoggard - 8**

NO.	Name	Min	FG			Rebounds			Fouls		TP	AS	TO	ST	Blocks		+/-
			M-A	3P	FT	OR	DR	TOT	PF	FD					BS	BA	
13	Kicey Gardner	03:50	0-2	0-1	0-0	0	0	0	0	0	0	0	1	0	0	0	-4
14	Tristan Shivers	08:00	2-4	0-0	1-1	0	0	0	1	1	5	1	1	0	0	0	1
23	Avery Fitzgerald	08:00	0-2	0-1	0-0	1	2	3	1	1	0	0	0	0	0	0	1
32	AK Chance	08:00	1-1	1-1	0-0	0	1	1	0	1	3	0	0	0	0	0	1
44	Emmy Seward	03:50	0-0	0-0	0-0	0	0	0	0	0	0	0	0	0	0	0	-4
10	Airlie Altman	04:10	0-1	0-0	0-0	1	1	2	0	0	0	0	0	0	0	0	5
33	Ella Jones	04:10	0-2	0-1	0-0	1	0	1	0	0	0	0	0	0	0	0	5
Team						0	1	1			0						
<b>Totals</b>			3-12	1-4	1-1	3	5	8	2	3	8	1	2	0	0	0	1

Shooting By Period		
1st FG%	3-12	25.0%
3PT%	1-4	25.0%
FT%	1-1	100%
GMFG%	3-12	25.0%
3PT%	1-4	25.0%
FT%	1-1	100.0%

Dead Ball Rebounds: 0, 0

Technical Fouls: NONE

	WAKE	HOG
Biggest lead	4 (1 <sup>st</sup> 4:22)	3 (1 <sup>st</sup> 5:53)
Best Scoring Run	7 (1 <sup>st</sup> 4:22)	5 (1 <sup>st</sup> 1:01)
Lead Changes	2	
Times Tied	1	
Time with Lead	03:57	01:56

Points from	WAKE	HOG
Turnovers	0	0
Paint	2	4
Second Chance	0	3
Fast Breaks	0	0
Bench	0	0

	Period by Period Scoring				
	1st	2nd	3rd	4th	TOT
WAKE	7	7	3	14	31
HOG	8	5	8	2	23



**Period 2**

**Period Starters:**

<b>HOG</b>	10 Altman A	14 Shivers T	23 Fitzgerald A	32 Chance A	33 Jones E
<b>WAKE</b>	2 Bagwell L	3 Amend N	5 Briggs H	10 Hamilton J	24 Schaffer A

Game Time	HOG	Score	Diff	WAKE
07:46				10 HAMILTON J 2pt FG outside the paint, jump shot missed
07:42	33 JONES E defensive rebound (2)			
07:04	10 ALTMAN A foul drawn (1)			24 SCHAFFER A foul personal (1 - 1)
07:04				24 SCHAFFER A substitution out
07:04				1 CONTI S substitution in
06:57	23 FITZGERALD A 3pt FG , jump shot missed			
06:51				5 BRIGGS H defensive rebound (1)
06:34				5 BRIGGS H turnover travel (2)
06:34				5 BRIGGS H substitution out
06:34				22 MCINTYRE M substitution in
06:15	10 ALTMAN A 2pt FG from turnover in the paint, layup missed			
06:15				1 CONTI S defensive rebound (1)
06:15	23 FITZGERALD A foul personal (2 - 1)			1 CONTI S foul drawn (1)
06:15	10 ALTMAN A substitution out			
06:15	13 GARDNER K substitution in			
05:58		<b>8-10</b>	<b>-2</b>	2 BAGWELL L 3pt FG , jump shot made (3)
05:58				1 CONTI S assist (1)
05:38	32 CHANCE A 3pt FG , jump shot missed			
05:31	33 JONES E offensive rebound (3)			
05:22	14 SHIVERS T 2pt FG second chance in the paint, layup missed			
05:16				2 BAGWELL L defensive rebound (2)
05:10				22 MCINTYRE M turnover bad pass (1)
04:38	33 JONES E 3pt FG from turnover, jump shot missed			
04:35				defensive dead ball rebound (2)
04:35	33 JONES E substitution out			
04:35	44 SEWARD E substitution in			
04:35				10 HAMILTON J substitution out
04:35				24 SCHAFFER A substitution in
04:08	32 CHANCE A steal (1)			2 BAGWELL L turnover lost ball (1)
03:45	14 SHIVERS T 3pt FG from turnover, jump shot missed			
03:39				defensive rebound (11)
03:20		<b>8-12</b>	<b>-4</b>	1 CONTI S 2pt FG in the paint, layup made (2)
03:20				22 MCINTYRE M assist (2)
03:10	13 GARDNER K foul offensive (1 - 2)			22 MCINTYRE M foul drawn (2)
03:10	13 GARDNER K turnover offensive (2)			
03:10	Timeout 30 Sec			
02:59	14 SHIVERS T steal (1)			2 BAGWELL L turnover bad pass (2)
02:40	23 FITZGERALD A 3pt FG from turnover, jump shot missed			
02:34				1 CONTI S defensive rebound (2)
02:30				1 CONTI S 3pt FG , jump shot missed
02:26	defensive dead ball rebound (1)			
02:26				2 BAGWELL L substitution out



Official Basketball Playby Play - 2nd Period  
**Wakefield at Hoggard**  
 03/12/25 LJVW, Winston-Salem, N.C.  
 NCHSAA-3

**Game Time:** 6:00 PM  
**Game Duration:** 1:19

**Officials:** Jeremy Gay, Shayne Jones, Daniel Brinkley

Game Time	HOG	Score	Diff	WAKE
02:26				10 HAMILTON J substitution in
02:08	13 GARDNER K 3pt FG , jump shot missed			
02:03				22 MCINTYRE M defensive rebound (4)
01:44	14 SHIVERS T steal (2)			10 HAMILTON J turnover lost ball (1)
01:39	14 SHIVERS T 2pt FG fast break from turnover in the paint, layup made (7)	<b>10-12</b>	<b>-2</b>	
01:23	13 GARDNER K substitution out			
01:23	33 JONES E substitution in			
01:12	44 SEWARD E steal (1)			24 SCHAFFER A turnover lost ball (1)
00:41	14 SHIVERS T 3pt FG from turnover, jump shot missed			
00:36	33 JONES E offensive rebound (4)			
00:35	32 CHANCE A 3pt FG from turnover second chance, jump shot made (6)	<b>13-12</b>	<b>1</b>	
00:35	33 JONES E assist (1)			
00:07		<b>13-14</b>	<b>-1</b>	22 MCINTYRE M 2pt FG in the paint, layup made (2)
00:00	14 SHIVERS T 3pt FG , jump shot missed			
00:00	offensive dead ball rebound (2)			
<b>END OF PERIOD</b>				
<b>HOG 13-14 WAKE</b>				



Officials: Jeremy Gay, Shayne Jones, Daniel Brinkley

**Wakefield - 7**

NO.	Name	Min	FG			Rebounds			Fouls		TP	AS	TO	ST	Blocks		+/-
			M-A	M-A	M-A	OR	DR	TOT	PF	FD					BS	BA	
2	Lyla Bagwell	05:34	1-1	1-1	0-0	0	1	1	0	0	3	0	2	0	0	0	5
3	Nicole Amend	08:00	0-0	0-0	0-0	0	0	0	0	0	0	0	0	0	0	0	2
10	Jaya Hamilton	05:51	0-1	0-0	0-0	0	0	0	0	0	0	1	0	0	0	0	
22	Maddison McIntyre	06:34	1-1	0-0	0-0	0	1	1	0	1	2	1	1	0	0	0	2
24	Aly Schaffer	05:31	0-0	0-0	0-0	0	0	0	1	0	0	0	1	0	0	0	-1
5	Heaven Briggs	01:26	0-0	0-0	0-0	0	1	1	0	0	0	0	1	0	0	0	0
1	Sydney Conti	07:04	1-2	0-1	0-0	0	2	2	0	1	2	1	0	0	0	0	2
Team						0	1	1			0		0				
<b>Totals</b>			3-5	1-2	0-0	0	6	6	1	2	7	2	6	0	0	0	2

Shooting By Period		
2 <sup>nd</sup> FG%	3-5	60.0%
3PT%	1-2	50.0%
FT%	0-0	0%
GMFG%	3-5	60.0%
3PT%	1-2	50.0%
FT%	0-0	0.0%

Dead Ball Rebounds: 0, 1

Technical Fouls: NONE

**Hoggard - 5**

NO.	Name	Min	FG			Rebounds			Fouls		TP	AS	TO	ST	Blocks		+/-
			M-A	M-A	M-A	OR	DR	TOT	PF	FD					BS	BA	
13	Kicey Gardner	04:52	0-1	0-1	0-0	0	0	0	1	0	0	0	1	0	0	0	-3
14	Tristan Shivers	08:00	1-5	0-3	0-0	0	0	0	0	0	2	0	0	2	0	0	-2
23	Avery Fitzgerald	08:00	0-2	0-2	0-0	0	0	0	1	0	0	0	0	0	0	0	-2
32	AK Chance	08:00	1-2	1-2	0-0	0	0	0	0	0	3	0	0	1	0	0	-2
44	Emmy Seward	04:35	0-0	0-0	0-0	0	0	0	0	0	0	0	0	1	0	0	1
10	Airlie Altman	01:45	0-1	0-0	0-0	0	0	0	0	1	0	0	0	0	0	0	0
33	Ella Jones	04:48	0-1	0-1	0-0	2	1	3	0	0	0	1	0	0	0	0	-2
Team						0	0	0			0		0				
<b>Totals</b>			2-12	1-9	0-0	2	1	3	2	1	5	1	1	4	0	0	-2

Shooting By Period		
2 <sup>nd</sup> FG%	2-12	16.7%
3PT%	1-9	11.1%
FT%	0-0	0%
GMFG%	2-12	16.7%
3PT%	1-9	11.1%
FT%	0-0	0.0%

Dead Ball Rebounds: 1, 1

Technical Fouls: NONE

	WAKE	HOG
Biggest lead	4 (2 <sup>nd</sup> 3:20)	1 (2 <sup>nd</sup> 7:46)
Best Scoring Run	5 (2 <sup>nd</sup> 3:20)	5 (2 <sup>nd</sup> 0:35)
Lead Changes	3	
Times Tied	0	
Time with Lead	05:30	02:16

Points from	WAKE	HOG
Turnovers	0	5
Paint	4	2
Second Chance	0	3
Fast Breaks	0	2
Bench	2	0

	Period by Period Scoring				
	1st	2nd	3rd	4th	TOT
WAKE	7	7	3	14	31
HOG	8	5	8	2	23



Officials: Jeremy Gay, Shayne Jones, Daniel Brinkley

**Wakefield - 14**

NO.	Name	Min	FG			Rebounds			Fouls		TP	AS	TO	ST	Blocks		+/-
			M-A	M-A	M-A	OR	DR	TOT	PF	FD					BS	BA	
2	Lyla Bagwell	13:34	1-1	1-1	0-0	1	1	2	1	0	3	1	2	0	0	0	4
3	Nicole Amend	14:40	0-1	0-1	0-0	0	1	1	0	0	0	0	1	0	0	0	3
10	Jaya Hamilton	13:51	1-4	0-1	2-2	0	1	1	0	1	4	0	1	0	0	0	-1
22	Maddison McIntyre	13:03	1-2	0-0	0-0	0	4	4	2	2	2	2	1	0	0	0	4
24	Aly Schaffer	13:31	1-4	1-4	0-0	0	1	1	1	0	3	0	1	0	0	0	-2
1	Sydney Conti	08:24	1-2	0-1	0-0	0	2	2	0	1	2	1	0	0	0	0	0
5	Heaven Briggs	02:57	0-0	0-0	0-0	0	1	1	0	0	0	0	2	0	0	0	-3
Team						0	1	1			0		0				
<b>Totals</b>			5-14	2-8	2-2	1	12	13	4	4	14	4	8	0	0	0	1

Shooting By Period		
1 <sup>st</sup> FG%	2-9	22.2%
3PT%	1-6	16.7%
FT%	2-2	100%
2 <sup>nd</sup> FG%	3-5	60.0%
3PT%	1-2	50.0%
FT%	0-0	0%
GMFG%	5-14	35.7%
3PT%	2-8	25.0%
FT%	2-2	100.0%

Dead Ball Rebounds: 1, 1

Technical Fouls: NONE

**Hoggard - 13**

NO.	Name	Min	FG			Rebounds			Fouls		TP	AS	TO	ST	Blocks		+/-
			M-A	M-A	M-A	OR	DR	TOT	PF	FD					BS	BA	
13	Kicey Gardner	08:42	0-3	0-2	0-0	0	0	0	1	0	0	0	2	0	0	0	-7
14	Tristan Shivers	16:00	3-9	0-3	1-1	0	0	0	1	1	7	1	1	2	0	0	-1
23	Avery Fitzgerald	16:00	0-4	0-3	0-0	1	2	3	2	1	0	0	0	0	0	0	-1
32	AK Chance	16:00	2-3	2-3	0-0	0	1	1	0	1	6	0	0	1	0	0	-1
44	Emmy Seward	08:25	0-0	0-0	0-0	0	0	0	0	0	0	0	0	1	0	0	-3
10	Airlie Altman	05:55	0-2	0-0	0-0	1	1	2	0	1	0	0	0	0	0	0	5
33	Ella Jones	08:58	0-3	0-2	0-0	3	1	4	0	0	0	1	0	0	0	0	3
Team						0	1	1			0		0				
<b>Totals</b>			5-24	2-13	1-1	5	6	11	4	4	13	2	3	4	0	0	-1

Shooting By Period		
1 <sup>st</sup> FG%	3-12	25.0%
3PT%	1-4	25.0%
FT%	1-1	100%
2 <sup>nd</sup> FG%	2-12	16.7%
3PT%	1-9	11.1%
FT%	0-0	0%
GMFG%	5-24	20.8%
3PT%	2-13	15.4%
FT%	1-1	100.0%

Dead Ball Rebounds: 1, 1

Technical Fouls: NONE

	WAKE	HOG
Biggest lead	4 (1 <sup>st</sup> 4:22)	3 (1 <sup>st</sup> 5:53)
Best Scoring Run	7 (1 <sup>st</sup> 4:22)	5 (1 <sup>st</sup> 1:01)
Lead Changes	5	
Times Tied	1	
Time with Lead	09:27	04:26

Points from	WAKE	HOG
Turnovers	0	5
Paint	6	6
Second Chance	0	6
Fast Breaks	0	2
Bench	2	0

	Period by Period Scoring				
	1st	2nd	3rd	4th	TOT
WAKE	7	7	3	14	31
HOG	8	5	8	2	23





**Period 3**

**Period Starters:**

<b>HOG</b>	14 Shivers T	23 Fitzgerald A	32 Chance A	13 Gardner K	33 Jones E
<b>WAKE</b>	3 Amend N	10 Hamilton J	22 McIntyre M	24 Schaffer A	2 Bagwell L

Game Time	HOG	Score	Diff	WAKE
08:00	13 GARDNER K substitution in			
08:00	44 SEWARD E substitution out			
08:00				1 CONTI S substitution out
08:00				2 BAGWELL L substitution in
07:17	jump ball situation			
07:17	13 GARDNER K turnover lost ball (3)			22 MCINTYRE M steal (1)
07:02	32 CHANCE A foul shooting (1 - 1)			22 MCINTYRE M foul drawn (3)
07:02				22 MCINTYRE M free throw 1 - 2 missed
07:02				offensive dead ball rebound (3)
07:02				22 MCINTYRE M free throw 2 - 2 missed
07:00	23 FITZGERALD A defensive rebound (4)			
06:38	33 JONES E foul drawn (1)			10 HAMILTON J foul shooting (1 - 1)
06:38	33 JONES E free throw 1 - 2 made (1)	<b>14-14</b>	<b>0</b>	
06:38	33 JONES E free throw 2 - 2 missed			
06:36				3 AVEND N defensive rebound (2)
06:19				24 SCHAFFER A 3pt FG , jump shot missed
06:16	defensive dead ball rebound (3)			
06:16	33 JONES E foul drawn (2)			22 MCINTYRE M foul personal (3 - 2)
06:01	33 JONES E 2pt FG in the paint, layup made (3)	<b>16-14</b>	<b>2</b>	
05:46				24 SCHAFFER A 3pt FG , jump shot missed
05:41	14 SHIVERS T defensive rebound (1)			
05:26	14 SHIVERS T 2pt FG in the paint, floating jump shot missed			
05:22	33 JONES E offensive rebound (5)			
05:18	32 CHANCE A 2pt FG second chance outside the paint, jump shot missed			
05:14				defensive rebound (15)
05:13				3 AVEND N substitution out
05:13				1 CONTI S substitution in
05:00	14 SHIVERS T steal (3)			22 MCINTYRE M turnover bad pass (2)
04:54	14 SHIVERS T 2pt FG from turnover in the paint, layup missed			
04:51	14 SHIVERS T offensive rebound (2)			
04:41	14 SHIVERS T 3pt FG from turnover second chance, jump shot missed			
04:32				10 HAMILTON J defensive rebound (2)
04:27				1 CONTI S turnover travel (1)
04:26				10 HAMILTON J substitution out
04:26				5 BRIGGS H substitution in
04:14	14 SHIVERS T foul drawn (2)			5 BRIGGS H foul personal (1 - 3)
04:14				24 SCHAFFER A substitution out
04:14				3 AVEND N substitution in
04:04	13 GARDNER K 2pt FG from turnover in the paint, layup blocked			
04:04				3 AVEND N block (1)



Official Basketball PlaybyPlay - 3rd Period  
**Wakefield at Hoggard**  
 03/12/25 LJVW, Winston-Salem, N.C.  
 NCHSAA-3

Game Time: 6:00 PM  
 Game Duration: 1:19

Officials: Jeremy Gay, Shayne Jones, Daniel Brinkley

Game Time	HOG	Score	Diff	WAKE
03:54				2 BAGWELL L defensive rebound (3)
03:42				2 BAGWELL L 3pt FG , jump shot missed
03:39	23 FITZGERALD A defensive rebound (5)			
03:36	13 GARDNER K turnover lost ball (4)			1 CONTI S steal (1)
03:30				22 MCINTYRE M turnover travel (3)
03:30	13 GARDNER K substitution out			
03:30	10 ALTMAN A substitution in			
03:20				3 AVEND N substitution out
03:20				10 HAMILTON J substitution in
03:15	14 SHIVERS T 2pt FG from turnover in the paint, layup missed			
03:14	33 JONES E offensive rebound (6)			
03:14	33 JONES E turnover travel (1)			
02:53				10 HAMILTON J 2pt FG from turnover in the paint, layup blocked
02:53	23 FITZGERALD A block (1)			
02:53	10 ALTMAN A defensive rebound (3)			
02:53	10 ALTMAN A foul drawn (2)			10 HAMILTON J foul personal (2 - 4)
02:39	14 SHIVERS T turnover bad pass (2)			10 HAMILTON J steal (1)
02:32				1 CONTI S turnover out of bounds (2)
02:14	32 CHANCE A foul offensive (2 - 2)			5 BRIGGS H foul drawn (1)
02:14	32 CHANCE A turnover offensive (1)			
02:14				5 BRIGGS H substitution out
02:14				24 SCHAFFER A substitution in
02:14	33 JONES E substitution out			
02:14	44 SEWARD E substitution in			
01:45		<b>16-17</b>	<b>-1</b>	2 BAGWELL L 3pt FG from turnover, jump shot made (6)
01:45				24 SCHAFFER A assist (1)
01:23	23 FITZGERALD A 2pt FG in the paint, layup missed			
01:23				defensive rebound (18)
01:08	10 ALTMAN A foul shooting (1 - 3)			22 MCINTYRE M foul drawn (4)
01:08				22 MCINTYRE M free throw 1 - 2 missed
01:08				offensive dead ball rebound (4)
01:08	10 ALTMAN A substitution out			
01:08	13 GARDNER K substitution in			
01:08				22 MCINTYRE M free throw 2 - 2 missed
01:07	23 FITZGERALD A defensive rebound (6)			
01:00	14 SHIVERS T 2pt FG in the paint, layup made (9)	<b>18-17</b>	<b>1</b>	
00:47				2 BAGWELL L 3pt FG , jump shot missed
00:43	32 CHANCE A defensive rebound (2)			
00:34	14 SHIVERS T turnover lost ball (3)			
00:34				Timeout 60 Sec
00:07	14 SHIVERS T steal (4)			22 MCINTYRE M turnover bad pass (4)
00:04	14 SHIVERS T 2pt FG fast break from turnover in the paint, layup made (11)	<b>20-17</b>	<b>3</b>	
00:03	14 SHIVERS T foul drawn (3)			22 MCINTYRE M foul shooting (4 - 5)
00:03				22 MCINTYRE M substitution out
00:03				3 AVEND N substitution in
00:03	14 SHIVERS T free throw fast break 1 - 1 made (12)	<b>21-17</b>	<b>4</b>	
<b>END OF PERIOD</b>				



Official Basketball PlaybyPlay - 3rd Period  
**Wakefield at Hoggard**  
03/12/25 LJVW, Winston-Salem, N.C.  
NC-SAA-3

**Game Time:** 6:00 PM  
**Game Duration:** 1:19

**Officials:** Jeremy Gay, Shayne Jones, Daniel Brinkley

Game Time	HOG	Score	Diff	WAKE
HOG 21-17 WAKE				



Officials: Jeremy Gay, Shayne Jones, Daniel Brinkley

**Wakefield - 3**

NO.	Name	Min	FG			Rebounds			Fouls		TP	AS	TO	ST	Blocks		+/-
			M-A	3P	FT	OR	DR	TOT	PF	FD					BS	BA	
2	Lyla Bagwell	08:00	1-3	1-3	0-0	0	1	1	0	0	3	0	0	0	0	0	-5
3	Nicole Amend	03:45	0-0	0-0	0-0	0	1	1	0	0	0	0	0	0	1	0	-4
10	Jaya Hamilton	06:54	0-1	0-0	0-0	0	1	1	2	0	0	0	1	0	1	-5	
22	Maddison McIntyre	07:56	0-0	0-0	0-4	0	0	0	2	2	0	0	3	1	0	0	-4
24	Aly Schaffer	06:00	0-2	0-2	0-0	0	0	0	0	0	0	1	0	0	0	0	-5
1	Sydney Conti	05:13	0-0	0-0	0-0	0	0	0	0	0	0	0	2	1	0	0	-2
5	Heaven Briggs	02:12	0-0	0-0	0-0	0	0	0	1	1	0	0	0	0	0	0	0
Team						0	2	2			0		0				
<b>Totals</b>			1-6	1-5	0-4	0	5	5	5	3	3	1	5	3	1	1	-5

Shooting By Period		
3rd FG%	1-6	16.7%
3PT%	1-5	20.0%
FT%	0-4	0%
GMFG%	1-6	16.7%
3PT%	1-5	20.0%
FT%	0-4	0.0%

Dead Ball Rebounds: 2, 0

Technical Fouls: NONE

**Hoggard - 8**

NO.	Name	Min	FG			Rebounds			Fouls		TP	AS	TO	ST	Blocks		+/-
			M-A	3P	FT	OR	DR	TOT	PF	FD					BS	BA	
13	Kicey Gardner	05:38	0-1	0-0	0-0	0	0	0	0	0	0	0	2	0	0	1	8
14	Tristan Shivers	08:00	2-6	0-1	1-1	1	1	2	0	2	5	0	2	2	0	0	5
23	Avery Fitzgerald	08:00	0-1	0-0	0-0	0	3	3	0	0	0	0	0	0	1	0	5
32	AK Chance	08:00	0-1	0-0	0-0	0	1	1	2	0	0	0	1	0	0	0	5
44	Emmy Seward	02:14	0-0	0-0	0-0	0	0	0	0	0	0	0	0	0	0	0	2
33	Ella Jones	05:46	1-1	0-0	1-2	2	0	2	0	2	3	0	1	0	0	0	3
10	Airlie Altman	02:22	0-0	0-0	0-0	0	1	1	1	1	0	0	0	0	0	0	-3
Team						0	0	0			0		0				
<b>Totals</b>			3-10	0-1	2-3	3	6	9	3	5	8	0	6	2	1	1	5

Shooting By Period		
3rd FG%	3-10	30.0%
3PT%	0-1	0.0%
FT%	2-3	66.7%
GMFG%	3-10	30.0%
3PT%	0-1	0.0%
FT%	2-3	66.7%

Dead Ball Rebounds: 0, 1

Technical Fouls: NONE

	WAKE	HOG
Biggest lead	1 (3 <sup>rd</sup> 7:02)	4 (3 <sup>rd</sup> 0:03)
Best Scoring Run	3 (3 <sup>rd</sup> 1:45)	5 (3 <sup>rd</sup> 0:03)
Lead Changes	3	
Times Tied	1	
Time with Lead	01:09	05:16

Points from	WAKE	HOG
Turnovers	3	3
Paint	0	6
Second Chance	0	0
Fast Breaks	0	3
Bench	0	3

	Period by Period Scoring				
	1st	2nd	3rd	4th	TOT
WAKE	7	7	3	14	31
HOG	8	5	8	2	23



**Period 4**

**Period Starters:**

<b>HOG</b>	13 Gardner K	14 Shivers T	23 Fitzgerald A	32 Chance A	33 Jones E
<b>WAKE</b>	1 Conti S	2 Bagwell L	3 Amend N	10 Hamilton J	24 Schaffer A

Game Time	HOG	Score	Diff	WAKE
08:00	44 SEWARD E substitution out			
08:00	33 JONES E substitution in			
07:54	14 SHIVERS T turnover bad pass (4)			
07:43				24 SCHAFFER A 3pt FG from turnover, jump shot missed
07:37				10 HAMILTON J offensive rebound (3)
07:28				3 AMEND N 2pt FG from turnover second chance in the paint, layup missed
07:26	14 SHIVERS T defensive rebound (3)			
07:16	14 SHIVERS T foul drawn (4)			2 BAGWELL L foul personal (2 - 1)
06:55	33 JONES E 3pt FG , jump shot missed			
06:50	14 SHIVERS T offensive rebound (4)			
06:47	32 CHANCE A 3pt FG second chance, jump shot missed			
06:44				defensive rebound (20)
06:00	32 CHANCE A foul shooting (3 - 1)			3 AMEND N foul drawn (1)
06:00		<b>21-18</b>	<b>3</b>	3 AMEND N free throw 1 - 2 made (1)
06:00				1 CONTI S substitution out
06:00				5 BRIGGS H substitution in
06:00		<b>21-19</b>	<b>2</b>	3 AMEND N free throw 2 - 2 made (2)
05:53	14 SHIVERS T turnover dribbling violation (5)			
05:53				5 BRIGGS H substitution out
05:53				1 CONTI S substitution in
05:36				10 HAMILTON J 2pt FG from turnover in the paint, layup missed
05:34				3 AMEND N offensive rebound (3)
05:34				3 AMEND N 2pt FG from turnover second chance in the paint, tip-in layup missed
05:34				3 AMEND N offensive rebound (4)
05:34	jump ball situation			
05:29		<b>21-21</b>	<b>0</b>	10 HAMILTON J 2pt FG second chance in the paint, layup made (6)
05:29				1 CONTI S assist (2)
05:27				Timeout 30 Sec
05:27				1 CONTI S substitution out
05:27				5 BRIGGS H substitution in
04:59	23 FITZGERALD A turnover travel (1)			
04:58				5 BRIGGS H substitution out
04:58				1 CONTI S substitution in
04:33				10 HAMILTON J 2pt FG from turnover in the paint, layup missed
04:29	14 SHIVERS T defensive rebound (5)			
04:04	Timeout 60 Sec			
04:04				1 CONTI S substitution out
04:04				5 BRIGGS H substitution in
03:45	14 SHIVERS T 2pt FG outside the paint, floating jump shot missed			



Official Basketball Play by Play - 4th Period  
**Wakefield at Hoggard**  
 03/12/25 LJVW, Winston-Salem, N.C.  
 NCHSAA-3

Game Time: 6:00 PM  
 Game Duration: 1:19

Officials: Jeremy Gay, Shayne Jones, Daniel Brinkley

Game Time	HOG	Score	Diff	WAKE
03:42				3 AMEND N defensive rebound (5)
03:17		<b>21-24</b>	<b>-3</b>	24 SCHAFFER A 3pt FG , jump shot made (6)
03:17				5 BRIGGS H assist (1)
02:57	14 SHIVERS T 2pt FG in the paint, layup made (14)	<b>23-24</b>	<b>-1</b>	
02:26	14 SHIVERS T foul personal (2 - 2)			10 HAMILTON J foul drawn (2)
02:15		<b>23-26</b>	<b>-3</b>	5 BRIGGS H 2pt FG in the paint, layup made (2)
02:15				2 BAGWELL L assist (2)
01:59	14 SHIVERS T turnover travel (6)			
01:59				5 BRIGGS H substitution out
01:59				22 MCINTYRE M substitution in
01:38	14 SHIVERS T foul personal (3 - 3)			22 MCINTYRE M foul drawn (5)
01:38	Timeout 60 Sec			
01:26	13 GARDNER K foul personal (2 - 4)			22 MCINTYRE M foul drawn (6)
01:19				22 MCINTYRE M turnover bad pass (5)
01:19				24 SCHAFFER A substitution out
01:19				5 BRIGGS H substitution in
01:03	jump ball situation			
00:55	23 FITZGERALD A 3pt FG from turnover, jump shot missed			
00:53				defensive rebound (24)
00:42	13 GARDNER K foul personal (3 - 5)			2 BAGWELL L foul drawn (1)
00:42				2 BAGWELL L free throw 1 - 2 missed
00:42				offensive dead ball rebound (5)
00:42		<b>23-27</b>	<b>-4</b>	2 BAGWELL L free throw 2 - 2 made (7)
00:35	13 GARDNER K turnover lost ball (5)			
00:34	jump ball situation			
00:34				5 BRIGGS H substitution out
00:34				24 SCHAFFER A substitution in
00:27	23 FITZGERALD A foul personal (3 - 6)			2 BAGWELL L foul drawn (2)
00:27				2 BAGWELL L free throw 1 - 2 missed
00:27				offensive dead ball rebound (6)
00:27				24 SCHAFFER A substitution out
00:27				5 BRIGGS H substitution in
00:27				2 BAGWELL L free throw 2 - 2 missed
00:25	32 CHANCE A defensive rebound (3)			
00:23	Timeout 60 Sec			
00:15	32 CHANCE A 3pt FG , jump shot missed			
00:10				2 BAGWELL L defensive rebound (4)
00:06	33 JONES E foul personal (1 - 7)			2 BAGWELL L foul drawn (3)
00:06		<b>23-28</b>	<b>-5</b>	2 BAGWELL L free throw 1 - 2 made (8)
00:06		<b>23-29</b>	<b>-6</b>	2 BAGWELL L free throw 2 - 2 made (9)
00:06				Timeout 60 Sec
00:06				2 BAGWELL L substitution out
00:06				5 BRIGGS H substitution out
00:06				1 CONTI S substitution in
00:06				24 SCHAFFER A substitution in
00:03	13 GARDNER K turnover bad pass (6)			22 MCINTYRE M steal (2)
00:02		<b>23-31</b>	<b>-8</b>	22 MCINTYRE M 2pt FG fast break from turnover in the paint, layup made (4)
<b>END OF GAME</b>				



Official Basketball PlaybyPlay - 4th Period  
**Wakefield at Hoggard**  
03/12/25 LJVW, Winston-Salem, N.C.  
NC-SAA-3

**Game Time:** 6:00 PM  
**Game Duration:** 1:19

**Officials:** Jeremy Gay, Shayne Jones, Daniel Brinkley

Game Time	HOG	Score	Diff	WAKE
HOG 23-31 WAKE				



Officials: Jeremy Gay, Shayne Jones, Daniel Brinkley

**Wakefield - 14**

NO.	Name	Min	FG			Rebounds			Fouls		TP	AS	TO	ST	Blocks		+/-
			M-A	3P	FT	OR	DR	TOT	PF	FD					BS	BA	
2	Lyla Bagwell	07:53	0-0	0-0	3-6	0	1	1	1	3	3	1	0	0	0	0	10
3	Nicole Amend	08:00	0-2	0-0	2-2	2	1	3	0	1	2	0	0	0	0	0	12
10	Jaya Hamilton	08:00	1-3	0-0	0-0	1	0	1	0	1	2	0	0	0	0	0	12
22	Maddison McIntyre	01:59	1-1	0-0	0-0	0	0	0	0	2	2	0	1	1	0	0	5
24	Aly Schaffer	06:55	1-2	1-2	0-0	0	0	0	0	0	3	0	0	0	0	0	9
5	Heaven Briggs	03:47	1-1	0-0	0-0	0	0	0	0	0	2	1	0	0	0	0	7
1	Sydney Conti	03:27	0-0	0-0	0-0	0	0	0	0	0	0	1	0	0	0	0	5
Team						0	2	2			0		0				
<b>Totals</b>			4-9	1-2	5-8	3	4	7	1	7	14	3	1	1	0	0	12

Shooting By Period		
4 <sup>th</sup> FG%	4-9	44.4%
3PT%	1-2	50.0%
FT%	5-8	62.5%
GMFG%	4-9	44.4%
3PT%	1-2	50.0%
FT%	5-8	62.5%

Dead Ball Rebounds: 2, 0

Technical Fouls: NONE

**Hoggard - 2**

NO.	Name	Min	FG			Rebounds			Fouls		TP	AS	TO	ST	Blocks		+/-
			M-A	3P	FT	OR	DR	TOT	PF	FD					BS	BA	
13	Kicey Gardner	08:00	0-0	0-0	0-0	0	0	0	2	0	0	0	2	0	0	0	-12
14	Tristan Shivers	08:00	1-2	0-0	0-0	1	2	3	2	1	2	0	3	0	0	0	-12
23	Avery Fitzgerald	08:00	0-1	0-1	0-0	0	0	0	1	0	0	0	1	0	0	0	-12
32	AK Chance	08:00	0-2	0-2	0-0	0	1	1	1	0	0	0	0	0	0	0	-12
44	Emmy Seward	00:00	0-0	0-0	0-0	0	0	0	0	0	0	0	0	0	0	0	0
33	Ella Jones	08:00	0-1	0-1	0-0	0	0	0	1	0	0	0	0	0	0	0	-12
Team						0	0	0			0		0				
<b>Totals</b>			1-6	0-4	0-0	1	3	4	7	1	2	0	6	0	0	0	-12

Shooting By Period		
4 <sup>th</sup> FG%	1-6	16.7%
3PT%	0-4	0.0%
FT%	0-0	0%
GMFG%	1-6	16.7%
3PT%	0-4	0.0%
FT%	0-0	0.0%

Dead Ball Rebounds: 0, 0

Technical Fouls: NONE

	WAKE	HOG
Biggest lead	8 (4 <sup>th</sup> 0:02)	4 (4 <sup>th</sup> 7:43)
Best Scoring Run	7 (4 <sup>th</sup> 3:17)	2 (4 <sup>th</sup> 2:57)
Lead Changes	1	
Times Tied	1	
Time with Lead	03:17	02:14

Points from	WAKE	HOG
Turnovers	2	0
Paint	6	2
Second Chance	2	0
Fast Breaks	2	0
Bench	2	0

	Period by Period Scoring				
	1st	2nd	3rd	4th	TOT
WAKE	7	7	3	14	31
HOG	8	5	8	2	23





Officials: Jeremy Gay, Shayne Jones, Daniel Brinkley

**Wakefield - 17**

NO.	Name	Min	FG			Rebounds			Fouls		TP	AS	TO	ST	Blocks		+/-
			M-A	M-A	M-A	OR	DR	TOT	PF	FD					BS	BA	
2	Lyla Bagwell	15:53	1-3	1-3	3-6	0	2	2	1	3	6	1	0	0	0	0	5
3	Nicole Amend	11:45	0-2	0-0	2-2	2	2	4	0	1	2	0	0	0	1	0	8
10	Jaya Hamilton	14:54	1-4	0-0	0-0	1	1	2	2	1	2	0	0	1	0	1	7
22	Maddison McIntyre	09:55	1-1	0-0	0-4	0	0	0	2	4	2	0	4	2	0	0	1
24	Aly Schaffer	12:55	1-4	1-4	0-0	0	0	0	0	0	3	1	0	0	0	0	4
1	Sydney Conti	08:40	0-0	0-0	0-0	0	0	0	0	0	0	1	2	1	0	0	3
5	Heaven Briggs	05:59	1-1	0-0	0-0	0	0	0	1	1	2	1	0	0	0	0	7
Team						0	4	4			0		0				
<b>Totals</b>			5-15	2-7	5-12	3	9	12	6	10	17	4	6	4	1	1	7

Shooting By Period		
3 <sup>rd</sup> FG%	1-6	16.7%
3PT%	1-5	20.0%
FT%	0-4	0%
4 <sup>th</sup> FG%	4-9	44.4%
3PT%	1-2	50.0%
FT%	5-8	62.5%
GMFG%	5-15	33.3%
3PT%	2-7	28.6%
FT%	5-12	41.7%

Dead Ball Rebounds: 4, 0

Technical Fouls: NONE

**Hoggard - 10**

NO.	Name	Min	FG			Rebounds			Fouls		TP	AS	TO	ST	Blocks		+/-
			M-A	M-A	M-A	OR	DR	TOT	PF	FD					BS	BA	
13	Kicey Gardner	13:38	0-1	0-0	0-0	0	0	0	2	0	0	0	4	0	0	1	-4
14	Tristan Shivers	16:00	3-8	0-1	1-1	2	3	5	2	3	7	0	5	2	0	0	-7
23	Avery Fitzgerald	16:00	0-2	0-1	0-0	0	3	3	1	0	0	0	1	0	1	0	-7
32	AK Chance	16:00	0-3	0-2	0-0	0	2	2	3	0	0	0	1	0	0	0	-7
44	Emmy Seward	02:14	0-0	0-0	0-0	0	0	0	0	0	0	0	0	0	0	0	2
10	Airlie Altman	02:22	0-0	0-0	0-0	0	1	1	1	1	0	0	0	0	0	0	-3
33	Ella Jones	13:46	1-2	0-1	1-2	2	0	2	1	2	3	0	1	0	0	0	-9
Team						0	0	0			0		0				
<b>Totals</b>			4-16	0-5	2-3	4	9	13	10	6	10	0	12	2	1	1	-7

Shooting By Period		
3 <sup>rd</sup> FG%	3-10	30.0%
3PT%	0-1	0.0%
FT%	2-3	66.7%
4 <sup>th</sup> FG%	1-6	16.7%
3PT%	0-4	0.0%
FT%	0-0	0%
GMFG%	4-16	25.0%
3PT%	0-5	0.0%
FT%	2-3	66.7%

Dead Ball Rebounds: 0, 1

Technical Fouls: NONE

	WAKE	HOG
Biggest lead	8 (4 <sup>th</sup> 0:02)	4 (3 <sup>rd</sup> 0:03)
Best Scoring Run	7 (4 <sup>th</sup> 3:17)	5 (3 <sup>rd</sup> 0:03)
Lead Changes	4	
Times Tied	2	
Time with Lead	04:26	07:47

Points from	WAKE	HOG
Turnovers	5	3
Paint	6	8
Second Chance	2	0
Fast Breaks	2	3
Bench	2	3

	Period by Period Scoring				
	1st	2nd	3rd	4th	TOT
WAKE	7	7	3	14	31
HOG	8	5	8	2	23



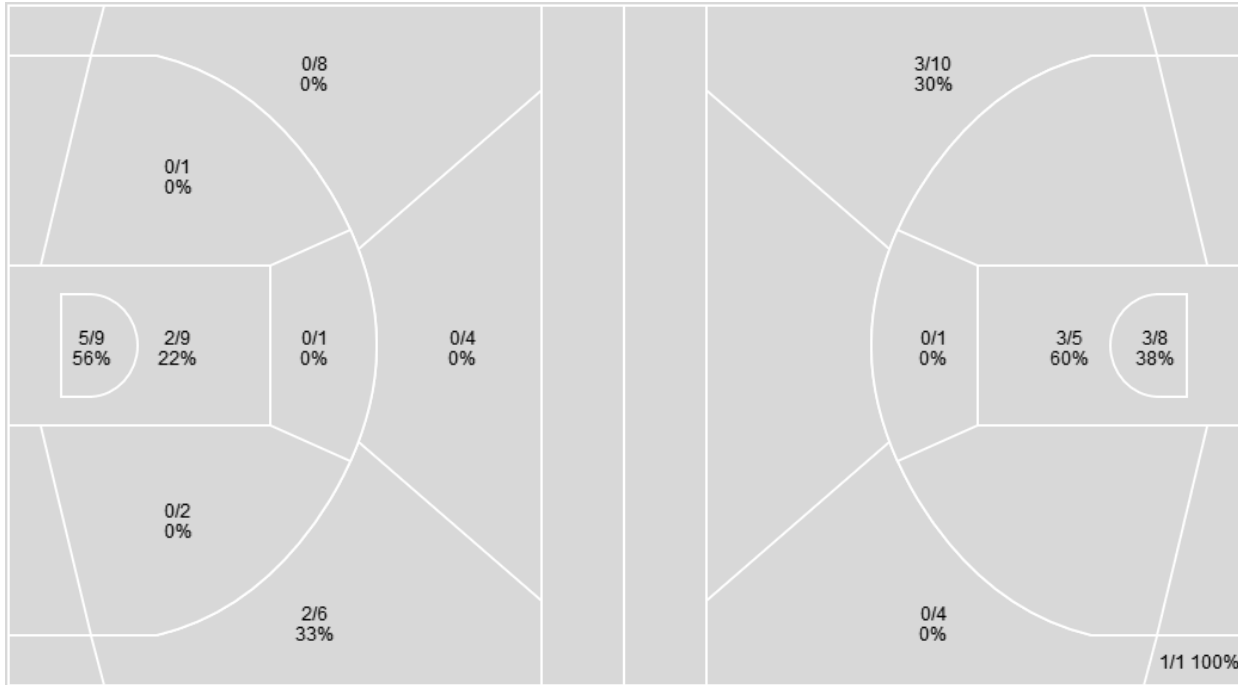
**Officials:** Jeremy Gay, Shayne Jones, Daniel Brinkley

Players => All; FG Types => All ; Results => All ;

Players => All; FG Types => All ; Results => All ;

**Hoggard**

**Wakefield**



Hoggard	M/A	%
Field Goals	9/40	22
2 Points	7/22	32
3 Points	2/18	11
Free Throws	3/4	75

Wakefield	M/A	%
Field Goals	10/29	34
2 Points	6/14	43
3 Points	4/15	27
Free Throws	7/14	50



Officials: Jeremy Gay, Shayne Jones, Daniel Brinkley

**Hoggard**

No	Name	Mins		Score		Points Diff		Points per Min		Assists		Rebounds		Steals		Turnovers	
		On	Off	On	Off	On	Off	On	Off	On	Off	On	Off	On	Off	On	Off
10	Airlie Altman	08:17	23:43	5-3	18-28	2	-10	0.60	0.76	0	2	9	15	0	6	4	11
13	Kicey Gardner	22:20	09:40	15-26	8-5	-11	3	0.67	0.83	1	1	14	10	5	1	11	4
14	Tristan Shivers	32:00	00:00	23-31	0-0	-8	0	0.72	0.00	2	0	24	0	6	0	15	0
23	Avery Fitzgerald	32:00	00:00	23-31	0-0	-8	0	0.72	0.00	2	0	24	0	6	0	15	0
32	AK Chance	32:00	00:00	23-31	0-0	-8	0	0.72	0.00	2	0	24	0	6	0	15	0
33	Ella Jones	22:44	09:16	13-19	10-12	-6	-2	0.57	1.08	1	1	20	4	2	4	12	3
44	Emmy Seward	10:39	21:21	13-14	10-17	-1	-7	1.22	0.47	2	0	5	19	5	1	3	12

**Wakefield**

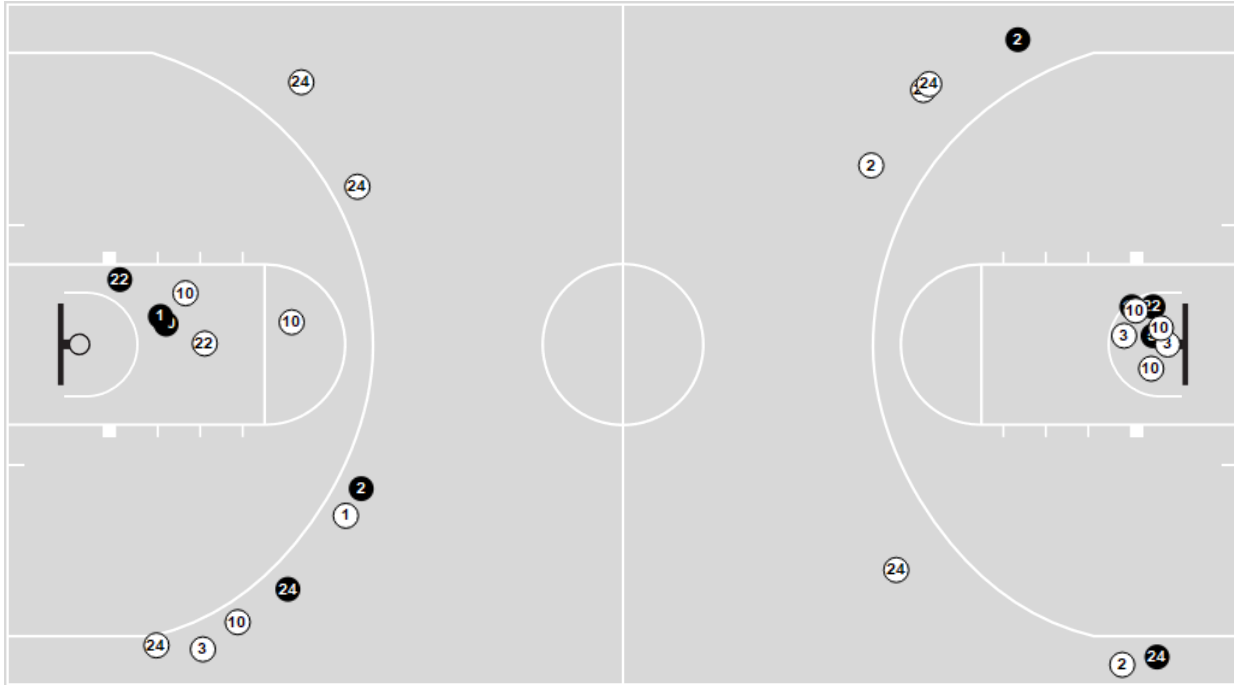
No	Name	Mins		Score		Points Diff		Points per Min		Assists		Rebounds		Steals		Turnovers	
		On	Off	On	Off	On	Off	On	Off	On	Off	On	Off	On	Off	On	Off
1	Sydney Conti	17:04	14:56	15-12	16-11	3	5	0.88	1.07	4	4	13	12	3	1	11	3
2	Lyla Bagwell	29:27	02:33	27-18	4-5	9	-1	0.92	1.57	8	0	24	1	3	1	12	2
3	Nicole Amend	26:25	05:35	28-17	3-6	11	-3	1.06	0.54	7	1	23	2	3	1	10	4
5	Heaven Briggs	08:56	23:05	9-5	22-18	4	4	1.01	0.95	2	6	6	19	2	2	4	10
10	Jaya Hamilton	28:45	03:15	29-23	2-0	6	2	1.01	0.62	7	1	22	3	3	1	11	3
22	Maddison McIntyre	22:58	09:02	22-17	9-6	5	3	0.96	1.00	5	3	18	7	4	0	12	2
24	Aly Schaffer	26:26	05:35	25-23	6-0	2	6	0.95	1.08	7	1	19	6	2	2	10	4



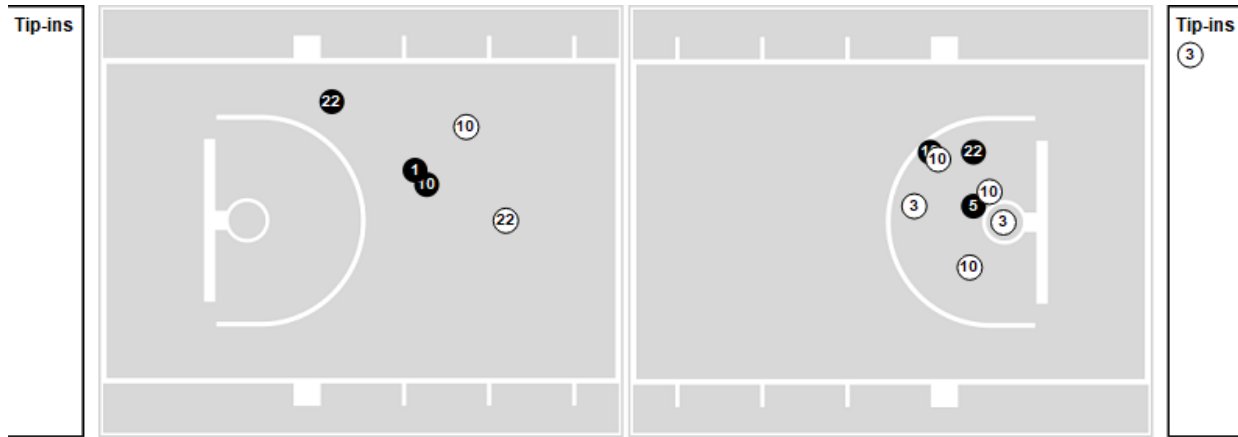
Officials: Jeremy Gay, Shayne Jones, Daniel Brinkley

Players => All ; FG Types => All ; Results => All ;  
**Wakefield**

**All Field Goals**



**Shots in the Paint**



● Made    ○ Missed    N - Player Number

Wakefield	M/A	%
Field Goals	10/29	34
2 Points	6/14	43
3 Points	4/15	27
Free Throws	7/14	50

Wakefield	M/A	%
Points in the Paint	12 (6/13)	46
Fast Break Points	2 (1/1)	100
Second Chance Points	2 (1/4)	25
Effective FG%	41	

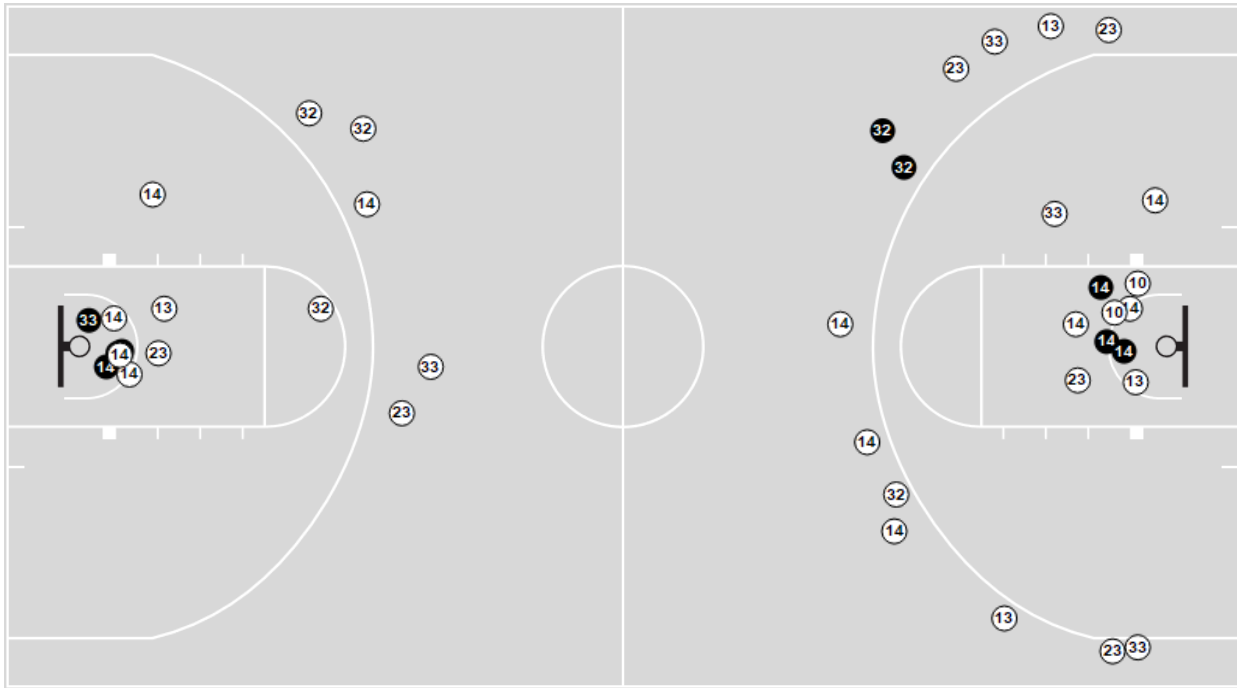


Officials: Jeremy Gay, Shayne Jones, Daniel Brinkley

Players => All ; FG Types => All ; Results => All ;

### Hoggard

#### All Field Goals



#### Shots in the Paint



● Made ○ Missed N - Player Number

Hoggard	M/A	%
Field Goals	9/40	22
2 Points	7/22	32
3 Points	2/18	11
Free Throws	3/4	75

Hoggard	M/A	%
Points in the Paint	14 (7/18)	39
Fast Break Points	5 (3/3)	100
Second Chance Points	6 (3/9)	33
Effective FG%	25	



**Wakefield**

Lineup	Time	Score	Score Diff	Pts/Min	Reb	Stl	Tov	Ast	PPP
2- Bagwell L/ 3- Amend N/ 10- Hamilton J/ 22- McIntyre M/ 24- Schaffer A/	09:12	7-8	-1	0.7598	8	1	2	2	0.6250
2- Bagwell L/ 3- Amend N/ 5- Briggs H/ 10- Hamilton J/ 24- Schaffer A/	04:38	6-3	3	1.2950	2	0	1	2	1.1029
1- Conti S/ 2- Bagwell L/ 10- Hamilton J/ 22- McIntyre M/ 24- Schaffer A/	03:47	3-4	-1	0.7919	2	0	3	1	0.3807
1- Conti S/ 2- Bagwell L/ 3- Amend N/ 10- Hamilton J/ 24- Schaffer A/	03:23	3-1	2	0.8837	4	0	0	1	0.8721
1- Conti S/ 3- Amend N/ 10- Hamilton J/ 22- McIntyre M/ 24- Schaffer A/	02:32	4-5	-1	1.5717	1	1	2	0	1.0000
1- Conti S/ 2- Bagwell L/ 3- Amend N/ 22- McIntyre M/ 24- Schaffer A/	02:09	2-0	2	0.9302	2	0	2	1	0.5000
1- Conti S/ 2- Bagwell L/ 3- Amend N/ 10- Hamilton J/ 22- McIntyre M/	01:59	3-0	3	1.5126	2	0	1	1	1.5000
1- Conti S/ 2- Bagwell L/ 5- Briggs H/ 10- Hamilton J/ 22- McIntyre M/	01:06	0-0	0	0.0000	0	1	1	0	0.0000
2- Bagwell L/ 3- Amend N/ 5- Briggs H/ 10- Hamilton J/ 22- McIntyre M/	01:05	3-0	3	2.7481	2	0	0	0	1.3636
1- Conti S/ 2- Bagwell L/ 3- Amend N/ 5- Briggs H/ 22- McIntyre M/	00:54	0-0	0	0.0000	1	1	1	0	0.0000
1- Conti S/ 2- Bagwell L/ 5- Briggs H/ 10- Hamilton J/ 24- Schaffer A/	00:30	0-2	-2	0.0000	0	0	0	0	0.0000
1- Conti S/ 2- Bagwell L/ 3- Amend N/ 5- Briggs H/ 10- Hamilton J/	00:30	0-0	0	0.0000	1	0	1	0	0.0000
1- Conti S/ 2- Bagwell L/ 5- Briggs H/ 22- McIntyre M/ 24- Schaffer A/	00:12	0-0	0	0.0000	0	0	0	0	0.0000



Officials: Jeremy Gay, Shayne Jones, Daniel Brinkley

**Hoggard**

Lineup	Time	Score	Score Diff	Pts/Min	Reb	Stl	Tov	Ast	PPP
13- Gardner K/ 14- Shivers T/ 23- Fitzgerald A/ 32- Chance A/ 33- Jones E/	14:10	5-17	-12	0.3529	10	1	8	0	0.2515
13- Gardner K/ 14- Shivers T/ 23- Fitzgerald A/ 32- Chance A/ 44- Seward E/	08:10	10-9	1	1.2245	4	4	3	1	0.6925
10- Altman A/ 14- Shivers T/ 23- Fitzgerald A/ 32- Chance A/ 33- Jones E/	07:11	5-0	5	0.6961	9	0	4	0	0.4789
14- Shivers T/ 23- Fitzgerald A/ 32- Chance A/ 33- Jones E/ 44- Seward E/	01:23	3-2	1	2.1687	1	1	0	1	1.5000
10- Altman A/ 14- Shivers T/ 23- Fitzgerald A/ 32- Chance A/ 44- Seward E/	01:06	0-3	-3	0.0000	0	0	0	0	0.0000



**Wakefield**

Lineup	Quarter On	Time On	Quarter Off	Time Off	Time on Court	Score	Score Diff	Reb	Stl	Tov	Ast	PPP
2- Bagwell L/ 3- Amend N/ 10- Hamilton J/ 22- McIntyre M/ 24- Schaffer A/	1	08:00	1	02:21	05:39	7-5	2	6	0	1	2	1.0174
1- Conti S/ 2- Bagwell L/ 10- Hamilton J/ 22- McIntyre M/ 24- Schaffer A/	1	02:21	1	01:31	00:50	0-0	0	0	0	0	0	0.0000
1- Conti S/ 2- Bagwell L/ 5- Briggs H/ 10- Hamilton J/ 24- Schaffer A/	1	01:31	1	01:01	00:30	0-2	-2	0	0	0	0	0.0000
2- Bagwell L/ 3- Amend N/ 5- Briggs H/ 10- Hamilton J/ 24- Schaffer A/	1	01:01	2	07:04	01:57	0-1	-1	1	0	1	0	0.0000
1- Conti S/ 2- Bagwell L/ 3- Amend N/ 5- Briggs H/ 10- Hamilton J/	2	07:04	2	06:34	00:30	0-0	0	1	0	1	0	0.0000
1- Conti S/ 2- Bagwell L/ 3- Amend N/ 10- Hamilton J/ 22- McIntyre M/	2	06:34	2	04:35	01:59	3-0	3	2	0	1	1	1.5000
1- Conti S/ 2- Bagwell L/ 3- Amend N/ 22- McIntyre M/ 24- Schaffer A/	2	04:35	2	02:26	02:09	2-0	2	2	0	2	1	0.5000
1- Conti S/ 3- Amend N/ 10- Hamilton J/ 22- McIntyre M/ 24- Schaffer A/	2	02:26	3	08:00	02:26	2-5	-3	1	0	2	0	0.6667
2- Bagwell L/ 3- Amend N/ 10- Hamilton J/ 22- McIntyre M/ 24- Schaffer A/	3	08:00	3	05:13	02:47	0-3	-3	2	1	0	0	0.0000
1- Conti S/ 2- Bagwell L/ 10- Hamilton J/ 22- McIntyre M/ 24- Schaffer A/	3	05:13	3	04:26	00:47	0-0	0	1	0	2	0	0.0000
1- Conti S/ 2- Bagwell L/ 5- Briggs H/ 22- McIntyre M/ 24- Schaffer A/	3	04:26	3	04:14	00:12	0-0	0	0	0	0	0	0.0000
1- Conti S/ 2- Bagwell L/ 3- Amend N/ 5- Briggs H/ 22- McIntyre M/	3	04:14	3	03:20	00:54	0-0	0	1	1	1	0	0.0000
1- Conti S/ 2- Bagwell L/ 5- Briggs H/ 10- Hamilton J/ 22- McIntyre M/	3	03:20	3	02:14	01:06	0-0	0	0	1	1	0	0.0000
1- Conti S/ 2- Bagwell L/ 10- Hamilton J/ 22- McIntyre M/ 24- Schaffer A/	3	02:14	3	00:03	02:10	3-4	-1	1	0	1	1	0.7732
1- Conti S/ 2- Bagwell L/ 3- Amend N/ 10- Hamilton J/ 24- Schaffer A/	3	00:03	4	06:00	02:03	1-1	0	2	0	0	0	0.6944
2- Bagwell L/ 3- Amend N/ 5- Briggs H/ 10- Hamilton J/ 24- Schaffer A/	4	06:00	4	05:53	00:07	1-0	1	0	0	0	0	2.2727
1- Conti S/ 2- Bagwell L/ 3- Amend N/ 10- Hamilton J/ 24- Schaffer A/	4	05:53	4	05:27	00:26	2-0	2	2	0	0	1	2.0000
2- Bagwell L/ 3- Amend N/ 5- Briggs H/ 10- Hamilton J/ 24- Schaffer A/	4	05:27	4	04:58	00:29	0-0	0	0	0	0	0	0.0000
1- Conti S/ 2- Bagwell L/ 3- Amend N/ 10- Hamilton J/ 24- Schaffer A/	4	04:58	4	04:04	00:54	0-0	0	0	0	0	0	0.0000
2- Bagwell L/ 3- Amend N/ 5- Briggs H/ 10- Hamilton J/ 24- Schaffer A/	4	04:04	4	01:59	02:05	5-2	3	1	0	0	2	2.5000
2- Bagwell L/ 3- Amend N/ 10- Hamilton J/ 22- McIntyre M/ 24- Schaffer A/	4	01:59	4	01:19	00:40	0-0	0	0	0	1	0	0.0000
2- Bagwell L/ 3- Amend N/ 5- Briggs H/ 10- Hamilton J/ 22- McIntyre M/	4	01:19	4	00:34	00:44	1-0	1	1	0	0	0	1.1364
2- Bagwell L/ 3- Amend N/ 10- Hamilton J/ 22- McIntyre M/ 24- Schaffer A/	4	00:34	4	00:27	00:06	0-0	0	0	0	0	0	0.0000
2- Bagwell L/ 3- Amend N/ 5- Briggs H/ 10- Hamilton J/ 22- McIntyre M/	4	00:27	4	00:06	00:21	2-0	2	1	0	0	0	1.5152
1- Conti S/ 3- Amend N/ 10- Hamilton J/ 22- McIntyre M/ 24- Schaffer A/	4	00:06	4	00:00	00:06	2-0	2	0	1	0	0	2.0000





**Hoggard**

Lineup	Quarter On	Time On	Quarter Off	Time Off	Time on Court	Score	Score Diff	Reb	Stl	Tov	Ast	PPP
13- Gardner K/ 14- Shivers T/ 23- Fitzgerald A/ 32- Chance A/ 44- Seward E/	1	08:00	1	04:10	03:50	3-7	-4	2	0	1	1	0.5000
10- Altman A/ 14- Shivers T/ 23- Fitzgerald A/ 32- Chance A/ 33- Jones E/	1	04:10	2	06:15	05:55	5-0	5	7	0	1	0	0.6720
13- Gardner K/ 14- Shivers T/ 23- Fitzgerald A/ 32- Chance A/ 33- Jones E/	2	06:15	2	04:35	01:40	0-3	-3	1	0	0	0	0.0000
13- Gardner K/ 14- Shivers T/ 23- Fitzgerald A/ 32- Chance A/ 44- Seward E/	2	04:35	2	01:23	03:12	2-2	0	0	3	1	0	0.4000
14- Shivers T/ 23- Fitzgerald A/ 32- Chance A/ 33- Jones E/ 44- Seward E/	2	01:23	3	08:00	01:23	3-2	1	1	1	0	1	1.5000
13- Gardner K/ 14- Shivers T/ 23- Fitzgerald A/ 32- Chance A/ 33- Jones E/	3	08:00	3	03:30	04:30	3-0	3	5	1	2	0	0.4360
10- Altman A/ 14- Shivers T/ 23- Fitzgerald A/ 32- Chance A/ 33- Jones E/	3	03:30	3	02:14	01:16	0-0	0	2	0	3	0	0.0000
10- Altman A/ 14- Shivers T/ 23- Fitzgerald A/ 32- Chance A/ 44- Seward E/	3	02:14	3	01:08	01:06	0-3	-3	0	0	0	0	0.0000
13- Gardner K/ 14- Shivers T/ 23- Fitzgerald A/ 32- Chance A/ 44- Seward E/	3	01:08	4	08:00	01:08	5-0	5	2	1	1	0	1.4535
13- Gardner K/ 14- Shivers T/ 23- Fitzgerald A/ 32- Chance A/ 33- Jones E/	4	08:00	4	00:00	08:00	2-14	-12	4	0	6	0	0.1818