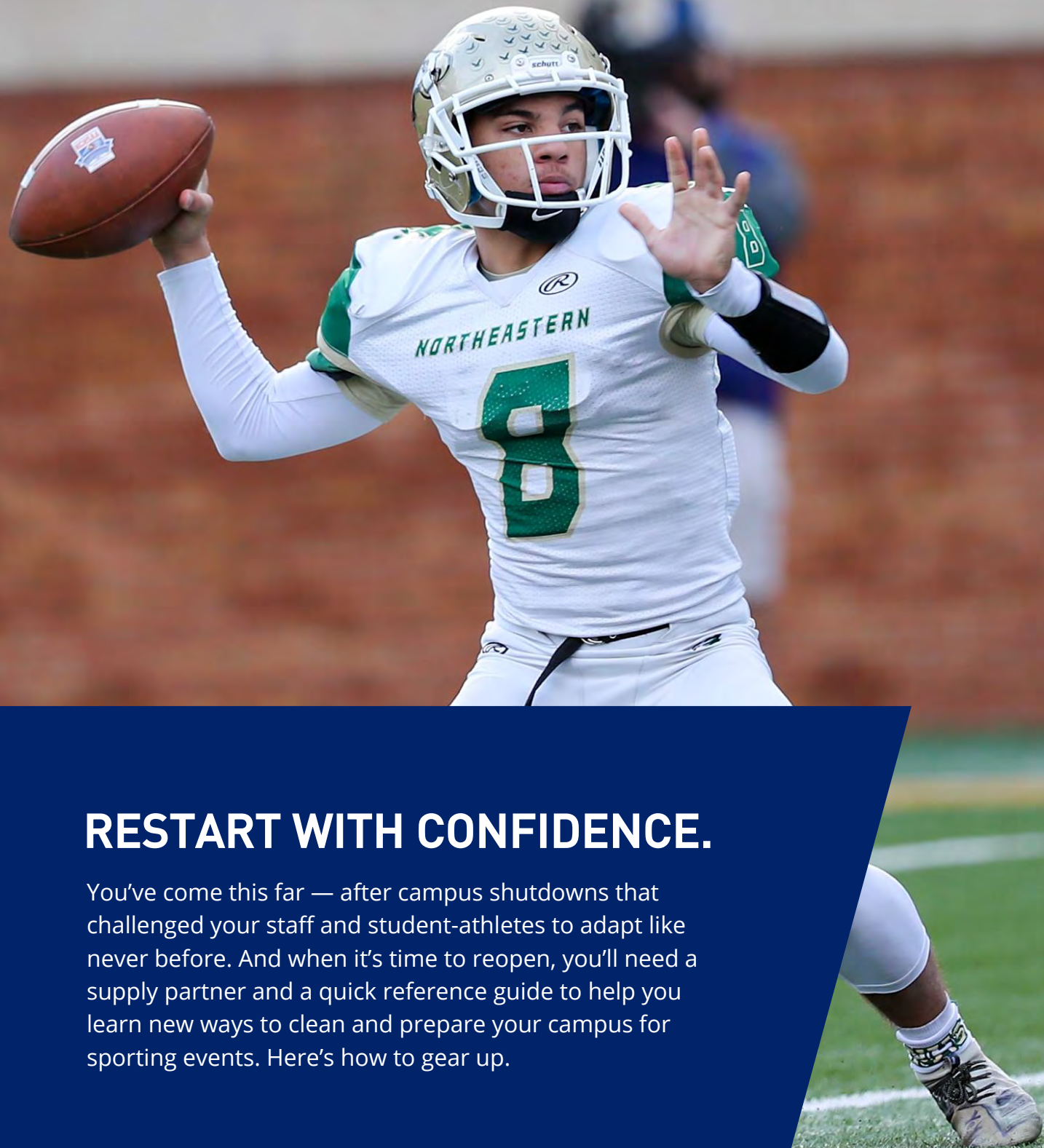


The background of the entire page is a photograph of a large indoor basketball arena. The floor is polished wood with purple and white court lines. In the background, there are purple bleachers and a basketball hoop. A dark blue diagonal banner is overlaid on the right side of the image, containing the main text.

CLEAN SLATE. FRESH START.

Reopening Strategies and Supplies
for NCHSAA Sports Venues



RESTART WITH CONFIDENCE.

You've come this far — after campus shutdowns that challenged your staff and student-athletes to adapt like never before. And when it's time to reopen, you'll need a supply partner and a quick reference guide to help you learn new ways to clean and prepare your campus for sporting events. Here's how to gear up.

This guide includes general information from the Centers for Disease Control (CDC) and the Environmental Protection Agency (EPA), along with ideas to help support local school reopening strategies. This information, as of July 2020, does not constitute medical or legal advice, nor does it serve as an endorsement of any service or product referenced herein. Schools should consider applicable laws and mandates, school policies, and unique cultural and community considerations to guide decisions and shape processes.

SOURCES: www.cdc.gov/coronavirus/2019-ncov/ | www.epa.gov/coronavirus | www.epa.gov/listn

ESSENTIALS AT A GLANCE.

- 01 CLEAN. DISINFECT. PROTECT. DISTANCE.
- 02 COMMON AREAS: ADMISSIONS GATE, CONCESSIONS STANDS & RESTROOMS
- 03 ENTRANCES & EXITS
- 04 SEATING
- 05 PRODUCT GUIDES
 - Disinfectants & Cleaners
 - Personal Protective Equipment (PPE)
 - Cleaning Equipment
 - Safety Equipment & Signage
 - Touchless Products
 - Masonry, Bagged Goods, Repair & Utilities
 - Tarps, Drop Cloths, Sheeting & Liners
 - Portable Tents & Miscellaneous Items
 - Portable A/C Units
- 06 HOW TO ORDER



CLEAN. DISINFECT. PROTECT. DISTANCE.

Strategies for opening sports venues vary not only from state to state, but also from district to district and even campus to campus. As healthcare professionals and scientists learn more about the novel coronavirus, federal guidance for sports and school campuses will likely evolve as well. Yet in any case, the following recommendations from the Centers for Disease Control and Prevention (CDC) and the Environmental Protection Agency (EPA) provide a sound starting point to help you open sports venues with confidence.

CLEAN AND DISINFECT SURFACES

Cleaning with soap and water reduces the amount of germs, dirt and impurities on the surface. Disinfecting kills germs on surfaces. Practice routine cleaning and disinfecting, especially on regularly touched surfaces that may require more frequent care. According to the CDC, regular cleaning staff may clean and disinfect community spaces as long as they:

- Wear appropriate protective gear while cleaning or handling trash.
- Are properly trained on appropriate use of cleaning and disinfection chemicals.
- Wash their hands often with soap and water for 20 seconds immediately after removing gloves.
- Carefully remove personal protective equipment (PPE) to avoid contamination of themselves and the surrounding area.

High-touch surfaces at sporting venues may include:

- | | | |
|---------------------|-----------------|-----------|
| • Sports Equipment | • Seating Areas | • Toilets |
| • Tickets | • Hand Rails | • Faucets |
| • Concession Stands | • Doorknobs | • Sinks |



For comprehensive,
up-to-date reopening
guidance, visit

cdc.gov

USE APPROVED PRODUCTS

When disinfecting, check the EPA registration number on the product and visit epa.gov/listn to make sure it meets the agency's criteria for use against SARS-CoV-2, the virus that causes COVID-19. Read labels carefully and follow directions for safe, effective product use, including recommended PPE, surface types and contact times.

PROTECT AND MAINTAIN DISTANCING

In addition to any PPE that should be worn while cleaning, disinfecting or emptying trash, face coverings are also recommended to help slow the spread of the virus, especially when physical distancing is difficult. When circumstances allow, maintain CDC-recommended social distancing of 6 feet.



02

COMMON AREAS

ADMISSION GATE, CONCESSION STANDS & RESTROOMS

NEW SOLUTIONS FOR SHARED SPACES

Every school year brings new challenges — and this year, the stakes are particularly high. Schools are stepping up to the challenge in different ways. From installing physical shields and barriers to rethinking **fan** seating arrangements, here are just a few tips to help schools explore new solutions at sporting venues.

COMMON AREAS

- If possible, close nonessential common areas, such as locker rooms, gymnasium foyers and tailgating in parking lots.
- Otherwise, stagger use and clean high-touch surfaces as recommended between sessions.

BENCH AREAS

- If possible, space bench chairs 6ft. apart.
- Have students maintain 6ft. apart when they are either standing or sitting on the bench.

PHYSICAL BARRIERS AND GUIDES

- Install physical barriers, such as clear plastic partitions, particularly in space-constrained areas that are not conducive to social distancing such as the admission gate and concession stand.
- Provide physical guides, such as tape on floors or sidewalks and signs on walls, to mark 6 feet of space in lines, or create one-way paths in hallways.

THINGS TO CONSIDER



ADMISSION GATE

- ☐ Hand sanitizer/dispensers
- ☐ Partitions between ticket takers & patrons.
- ☐ Wipes/disinfectants
- ☐ Face portection
- ☐ Signage
- ☐ Infrared thermometers
- ☐ Disposable gloves
- ☐ Touchless/Digital Tickets

CONCESSION STANDS

- ☐ Hand sanitizer/dispensers
- ☐ Partitions between concession workers and patrons.
- ☐ Wipes/disinfectants
- ☐ Signage
- ☐ Floor marking tape
- ☐ Disposable gloves
- ☐ Stanchions

RESTROOMS

- ☐ Touchless soap dispensers
- ☐ Touchless towel dispensers
- ☐ Wipes/disinfectants
- ☐ Signage
- ☐ Aluminum foot pulls
- ☐ Touchless flush valves
- ☐ Antimicrobial partitions
- ☐ Touchless faucets
- ☐ Touchless hand dryers
- ☐ Hands-free door handles



DID YOU KNOW?

The CDC recommends teaching and reinforcing frequent handwashing with soap and water for at least 20 seconds. Signage and increased monitoring may help with compliance.



ENTRANCES & EXITS

START AND END EACH EVENT WITH SUPPLIES TO SUPPORT HEALTHY HABITS

In areas where people are coming and going, the CDC recommends posting signs in highly visible locations to help promote beneficial behaviors like wearing masks, washing hands or observing social distancing. These habits not only help minimize the spread of the virus — they also fight other health threats like seasonal flu.

THINGS TO CONSIDER

When fans are able to return to athletic events considering creating zones to eliminate corss-over and minimize the amount of exposure between fans. Create dedicated entry and exit points to minimize contact amongst guests. Ensure entry queues are structured to support social distancing. Keep aisles clear to avoid congestion when entering & exiting

ENTRANCES & EXITS

- ☐ Hand sanitizer/dispensers
- ☐ Face protection
- ☐ Wipes/disinfectants
- ☐ Signage
- ☐ Infrared thermometers
- ☐ Disposable gloves
- ☐ Stanchions
- ☐ Barricades/cones
- ☐ Touchless trash cans
- ☐ Caution tape
- ☐ Floor marking tape



DID YOU KNOW?

The COVID-19 Communications Resources page of CDC.gov offers free print and digital resources to post in your lobby, on your website or on school social media accounts.

SEATING

PREPARING SPORTS VENUES FOR FANS IN ATTENDANCE.

As you begin to welcome fans back to your sporting venues it is imperative to have a plan that maximizes fan experience and safety. Work to maintain social distancing in the stands and encourage all attendees to wear face coverings. Signage and communication about what fans should expect when coming to a sporting event is critical.



DID YOU KNOW?

The CDC recommends waiting 24 hours before you clean or disinfect after closing off areas used by someone who is sick.



THINGS TO CONSIDER

OUTDOOR VENUES

- ☐ Signage
- ☐ Close off sections
- ☐ One-way aisles
- ☐ Limit group ticket purchases
- ☐ Masks
- ☐ PA Announcements about social distancing
- ☐ Close areas that promote gathering of individuals
- ☐ Ensure social distancing in Press Box
- ☐ Evacuation Plan

INDOOR VENUES

- ☐ Signage
- ☐ Close off sections
- ☐ One-way aisles
- ☐ Limit group ticket purchases
- ☐ Masks
- ☐ PA Announcements about social distancing
- ☐ Close areas that promote gathering of individuals
- ☐ Create Partition at Scoring Table

DISINFECTANTS & CLEANERS

DISINFECTANTS

ZEP ANTIBACTERIAL DISINFECTANT & CLEANER WITH LEMON - GALLON



PRODUCT # 1024776

- Kills 99.9% of germs and controls mold and mildew
- Cleans, disinfects and deodorizes
- Will not leave grit or soap scum

RESTOROX - GALLON



PRODUCT # 521019

- One-step disinfectant cleaner and deodorizer
- Cleans, kills and prevents mold and mildew

RESTOROX - 32-OZ



PRODUCT # 521018

- One-step disinfectant cleaner and deodorizer
- Cleans, kills and prevents mold and mildew

FANTASTIK MULTI-SURFACE DISINFECTANT - 32-OZ SPRAY



PRODUCT # 500545

- Ready-to-use for cleaning most washable surfaces
- Removes grease, scuff marks, crayon, pencil and smoke stains

WINDEX MULTI-SURFACE DISINFECTANT - 32-OZ SPRAY BOTTLE



PRODUCT # 521011

- Kills 99% of germs and bacteria on hard, non-porous surfaces
- For use on many surfaces and fixtures throughout the facility

MR. CLEAN HOME PRO ALL-PURPOSE DISINFECTANT CLEANER - GALLON



PRODUCT # 14764

- Use on linoleum, tile, finished hardwood floors, toilets, and more
- Cuts through 100% of dirt, grease and grime

DISINFECTANT WIPES



SCRUBS IN-A-BUCKET

PRODUCT # 544101

- 72-count
- Heavy-duty, waterless hand cleaning towels
- Pre-moistened with super-effective cleaning solution



LYSOL 80-COUNT LEMON/LIME DISINFECTANT ALL-PURPOSE WIPES

PRODUCT # 227705

- For quick touch-ups and to help stop the spread of germs
- Kills 99.9% of viruses and bacteria, including cold and flu viruses (when used as directed)
- Lemon and lime scent

LYSOL 80-COUNT LEMON/LIME DISINFECTANT ALL-PURPOSE WIPES



PRODUCT # 667496

- 3-pack
- For quick touch-ups and to help stop the spread of germs
- Kills 99.9% of viruses and bacteria, including cold and flu viruses (when used as directed)
- Lemon and lime scent



To view our full range of products, visit [LowesForPros.com](https://www.LowesForPros.com)



If soap and water are not available and hands are not visibly dirty, the CDC recommends an alcohol-based hand sanitizer containing at least **60% alcohol**.

CLEANERS



JOMAX CLEANER & MILDEW KILLER - GALLON ⚠️ SEE PAGE 35

PRODUCT # 512030
(📞 CALL TO ORDER)

- Mix with water and bleach to treat mildew stains from exterior surfaces
- One gallon of JOMAX makes twenty gallons of solution
- Kills mold and mildew on contact, while removing dirt and stains
- Not recommended for interior use



HASA ALL-PURPOSE BLEACH - GALLON

PRODUCT # 512020

- Case of 6
- Liquid chlorine bleach
- Additional freight charges will apply for shipments outside our local delivery areas



MAJESTIC CLEAR AMMONIA - GALLON

PRODUCT # 512000
(📞 CALL TO ORDER)

- Non-sudsing
- For general or heavy-duty cleaning



SCRUBBING BUBBLES ANTIBACTERIAL BATHROOM CLEANER - 22-OZ AEROSOL

PRODUCT # 510280
(📞 CALL TO ORDER)

- Antibacterial foaming action thoroughly cleans, shines, sanitizes and deodorizes
- Attacks soap scum, hard water stains and dirt



ZEP STREAK-FREE GLASS CLEANER - GALLON

PRODUCT # 369840

- Ammonia-based professional-grade formula
- Removes grime, dirt and fingerprints
- For use on: windows, mirrors and other glass surfaces

SANITIZING WANDS



UV SANITIZING WAND

★ SPECIAL ORDER PRODUCT

- UV-C light eliminates up to 99.9% of viruses, germs, bacteria, mold, allergens, dust mites and flea eggs on surfaces
- Odorless sanitizing with no chemical residue
- Chemical-free sanitizing of cellphones, bathroom surfaces, children's toys, electronics, money and more for home and on the go



PERSONAL PROTECTIVE EQUIPMENT (PPE)

GLOVES



LARGE NITRILE GLOVES - BLUE

PRODUCT # 2462403

- Box of 100
- Latex-free and powder free
- One size fits most



LARGE NITRILE GLOVES - BLACK

PRODUCT # 533079

- Box of 200
- Powder-free



LARGE YELLOW LATEX RUBBER GLOVES

PRODUCT # 533055

- 1-pair
- For general cleaning
- Cotton flock interior lining for comfort
- Chemical-resistant to mild detergents, acids, solvents and germicides



LARGE VINYL CLEANING GLOVES

PRODUCT # 882518

- 50-count
- Latex and powder free
- Form fitting and flexible
- High quality vinyl material

APPAREL



L/XL POLYPROPYLENE PROTECTIVE COVERALLS

PRODUCT # 126369

- Coveralls protect clothes
- Elastic sewn in back and legs
- Tough and durable protective wear



L/XL MICROPOROUS FILM LAMINATE PROTECTIVE HEAVY-DUTY COVERALLS

PRODUCT # 631595

- Solvent resistant protection against nonhazardous particulates
- Liquid resistant and lightweight material
- Can be used for paint and pesticide spraying



DISPOSABLE SHOE COVERS

PRODUCT # 895224

- 300-pack
- Slip resistant and easy to slip over shoes
- Protects shoes from paint splatters and spray
- Protects carpets and floors from tracking dirt or paint
- One size fits most



NATURAL FIBER PROTECTIVE HOOD

PRODUCT # 126352

- Protects head, face and neck
- One size fits most
- Washable



To view our full range of products, visit [LowesForPros.com](https://www.lowesforpros.com)



After using disposable gloves, throw them out in a lined trash can. **Do not disinfect or reuse the gloves,** per CDC guidance.

ESSENTIALS



BOUNTY PREMIUM ROLL PAPER TOWELS

PRODUCT # 540026
(CALL TO ORDER)

- 24-count
- White 2-ply perforated roll towels
- 83 towels per roll
- 2X more absorbent than regular roll



HEAVENLY SOFT KITCHEN ROLL TOWEL

PRODUCT # 540022

- 30-count
- White 2-ply perforated roll towels
- 85 sheets per roll



COTTON KNIT RAGS, RECYCLED WHITE

PRODUCT # 544150

- White cotton rags 5-lb
- Washed white cotton knit cloths from unused pre-consumer waste cloth



SCOTT RAGS IN-A-BOX

PRODUCT # 544120

- Box of 200
- Disposable towels in pop-up dispenser box
- White 10" x 14" heavy-duty paper wiping rags



WORKMAN'S FRIEND SKIN BARRIER CREAM - 3.8-OZ

PRODUCT # 516211

- Effectively hydrates and moisturizes skin
- Hands are clean with a single wipe
- Guards against skin irritants, glue, paint, grime and dirt
- Odorless and non-toxic



16.9-OZ BOTTLED WATER

PRODUCT # 896010
(CALL TO ORDER)

- 24-count
- Plastic bottles
- Purified water



HELPFUL HINT

Stock up on bottled water to help cleaning and maintenance crews stay hydrated as they work hard to prepare your campus for students and staff.



PERSONAL PROTECTIVE EQUIPMENT (PPE) CONT.

SAFETY/PPE



COUNTER TOP SNEEZE GUARD

PRODUCT # 895690

- 24"W x 36"H
- Sturdy aluminum frame with acrylic shield
- Crystal-clear acrylic, 1/8" thick
- Ultra-bonded, self-adhesive tape affixes frame to counter



CLEAR FACE SHIELD

PRODUCT # 895003

- Protects face area
- Polycarbonate



DISPOSABLE DUAL RESPIRATOR WITH ORGANIC VAPOR CARTRIDGE

PRODUCT # 895050

- Pre-assembled to eliminate cartridge & filter attachment
- Low-profile cartridges designed for better vision & balance
- Use 895055 replacement filters



3M 8511 N95 RESPIRATOR WITH COOL FLOW VALVE

PRODUCT # 895076 - 2-PACK

PRODUCT # 895078 - 5-PACK

(CALL TO ORDER)

- NIOSH-approved for at least 95% filtration efficiency against certain non-oil-based particles
- 3M Cool Flow Exhalation Valve helps reduce heat build-up inside the respirator
- M-Noseclip adjusts easily for fewer pressure points and greater comfort
- Braided headbands two-strap design with dual point attachment helps provide a secure seal



DISPOSABLE FACE MASKS

PRODUCT # 895083

- 50-pack
- 3-ply general purpose mask
- Ear strap design
- Not NIOSH-approved and is not intended for healthcare, medical or surgical use



N95 PARTICULATE REPLACEMENT FILTER FOR 895050

PRODUCT # 895055

- 95% filter efficiency level
- Effective against particulate aerosols free of oil
- Time use restrictions may apply



SAFETY GOGGLES

PRODUCT # 895002

- Polycarbonate lenses
- Protects against chemical splashes and large particles



To view our full range of products, visit [LowesForPros.com](https://www.LowesForPros.com)



Why do masks matter? Carriers of COVID-19 can spread the disease long before they begin to show symptoms. According to the CDC, when more people wear face coverings, **the risk of infection goes down.**



YELLOW REFLECTIVE SAFETY VEST

PRODUCT # 895680

- Secures with Velcro closure
- 1" reflective tape on shoulders
- One size fits all



UV PROTECTANT NECK GAITER

PRODUCT # 1362065

- High-performance, moisture-wicking, seamless stretch fabric
- Can be worn in multiple ways on the neck, face, head and wrist
- Anti-odor treatment



READY AMERICA SURVIVAL KIT

PRODUCT # 281283

- Emergency supplies to sustain two people for three days
- Food, water and emergency blankets
- First aid supplies, light sticks, dust masks and more



3M SCOTCHGARD PLASTIC ANTI-FOG SAFETY GLASSES

PRODUCT # 1341453

- Premium anti-fog coating helps you see clearly for longer
- Durable lenses help provide limited protection from light to moderate impact hazards



INFRARED BODY TEMPERATURE THERMOMETER

PRODUCT # 895682

- Non-contact high-accuracy design, reads thermal radiation
- Battery operated (2-AAA)
- Reads Celsius or Fahrenheit, liquid crystal display



5-LB PREMIUM RECHARGEABLE FIRE EXTINGUISHER

PRODUCT # 314106

- The First Alert HOME2PRO fire extinguisher is UL rated 2-A:10-B:C and meets minimum 2-A:10-B:C code requirements; it features durable all-metal construction
- Uses mono ammonium phosphate extinguishing agent; rechargeable by certified professionals after use



OVER THE EYEGLASSES PLASTIC SAFETY GLASSES

PRODUCT # 516680

- Prescription safety eyeglass protector
- High-impact and scratch-resistant lenses
- Lenses absorb up to 99.9% UV



CLEANING EQUIPMENT

MOPS & CARTS



SWIFFER SPRAY MOP DOUBLE NOZZLE - 16.9-FL OZ

PRODUCT # 687870

- Designed to act as a hardwood floor cleaner, laminate floor cleaner, and tile cleaner
- Starter kit includes (1) power floor spray mop, (3) extra power pad refills, (2) original mopping pad refills, (1) 500 mL bottle of cleaning solution, (4) batteries



NON-WRINGING STRING MOP

PRODUCT # 748840

- #24 looped-end mop
- Use for everyday cleaning at work and home
- Comes with 60" Invader handler



WAVEBRAKE 35-QUART COMMERCIAL MOP WRINGER BUCKET WITH WHEELS

PRODUCT # 92764

- High-efficiency side-press wringer
- Tested to exceed 50,000 wringing cycles
- Durable construction

CADDYS



CLEANING CADDY

PRODUCT # 805805

- Large compartments fit nearly all standard chemical cleaner bottles and wipes
- Small compartments are great for sponges, brushes, gloves and rags

SQUEEGEES



RUBBER WINDOW SQUEEGEE

PRODUCT # 202656

- Convenient all-in-1 tool
- Long-lasting silicone blade
- Work safely from the ground with 5-ft pole (included)



To view our full range of products, visit [LowesForPros.com](https://www.LowesForPros.com)



Sprayers can **make fast work of applying disinfectant** to common areas, classrooms, school buses and more.

SPRAYERS



GRACO HP 130 CART AIRLESS SANI-SPRAYER

PRODUCT # 547292 ⚠
(CALL TO ORDER)

- Dual guns provide maximum productivity & sanitation
- Spark-free motor allows spraying of alcohol-based chemicals
- Extend spraying without any refills
- Cart easily moves sprayer and chemical bucket together
- 120V corded



PLASTIC SPRAY BOTTLE

PRODUCT # 502461

- 32-oz fluid capacity
- Integrated scale
- Convenient contents label



GRACO HP 20 CORDLESS SANI-SPRAYER

PRODUCT # 547290 ⚠
(CALL TO ORDER)

- For areas that require maximum portability
- Includes (2) DeWalt 20V lithium-ion batteries & charger
- Sprays up to 2.5-gallons per charge
- Ability to spray alcohol-based chemicals



PROFESSIONAL CORDLESS ELECTROSTATIC HANDHELD SPRAYER

★ SPECIAL ORDER PRODUCT

- 1 liter easy fill tank
- 3-4 ft optimum spray range



PROFESSIONAL CORDLESS ELECTROSTATIC BACKPACK SPRAYER

★ SPECIAL ORDER PRODUCT

- 2-1/4 gallon easy fill tank
- 4-6 ft optimum spray range
- Ideal for disinfecting, sanitizing, odor removal, decontamination, pesticides/fertilizing & more
- Patented electrostatic charge penetrates chemical providing a thin even spray on all surfaces
- Cordless convenience allows for effortless movement room to room
- 3-1 nozzles let you set the spray particle size to match your application
- 4 hour battery run time



SAFETY EQUIPMENT & SIGNAGE

SIGNAGE

SAFETY POSTER: COVID-19 KEEP THE WORKPLACE SAFE



★ SPECIAL ORDER PRODUCT

- 22" x 17", non-laminated
- Promotes good hygiene throughout your facility
- Printed in bold, eye-catching colors

10" X 14" ANSI BLANK CAUTION SIGN



PRODUCT # 1258786

- Great for businesses and construction zones
- High visibility Caution Sign
- Features a blank space to insert custom message

SIGN HOLDER WITH PEDESTAL STAND



★ SPECIAL ORDER PRODUCT

- 11"W x 15"D x 62"H
- Comes with a round metal base and adjustable metal pole that allows for height adjustment
- 11"W x 17"D sign
- Acrylic clear vertical style

4" X 6" SOCIAL DISTANCING ADHESIVE DECAL



PRODUCT # 2538021

- Easy to display on windows, counters or floors
- Printed on white self-adhesive vinyl

O'CEDAR WET FLOOR SIGN



PRODUCT # 531225

- Folding design for convenient storage
- Tubular plastic/polyester
- 11"W x 26-1/2"H, double-sided

8" X 12" SOCIAL DISTANCE STYRENE SIGN



PRODUCT # 2538022

- Easy to display on windows, counters or aisles
- Printed on white styrene plastic



To view our full range of products, visit [LowesForPros.com](https://www.lowes.com/lowesforpros)



Don't forget about the spaces beyond your walls — like outdoor stanchions and signage to support **6 feet of separation** at student pick-up and drop-off points.

BARRICADES



MOBILE BARRICADE SECTION

☆ SPECIAL ORDER PRODUCT

- Easy set-up plastic, walled crowd control orange barricade with steel legs and feet
- 3"W x 42"H x 86-1/4"L
- 50% thicker double-wall panel, prevents warping or bending
- Holes for bolting signs if required



SAFETY FIRST FOLDING FABRIC BARRIER

☆ SPECIAL ORDER PRODUCT

- 38"H x 3-1/2"D x 69" expanded length inches
- Tubular plastic/polyester
- Green/yellow with red print

SAFETY EQUIPMENT



2" SAFETY TAPE

PRODUCT # 223811

- 1-piece per retail package
- Made using heat resistant vinyl, an extremely durable material that is flexible and resistant to impact, weather and tear
- 2" x 24"



28" SAFETY WORKS ORANGE TRAFFIC SAFETY CONE ⚠ SEE PAGE 35

PRODUCT # 1356270

- Injection molded engineering makes cone more durable
- Engineered to meet MUTCD and most DOT specifications
- 360° visibility



REFLECTIVE SAFETY TAPE ⚠ SEE PAGE 35

PRODUCT # 855990

- Self-adhesive vinyl tape
- Water resistant
- 2" x 24"



FLOOR TAPE APPLICATOR

☆ SPECIAL ORDER PRODUCT

- Up to 4-1/2"W tape allows easy tape installation for warehouses, commercial property, parking garages, and more
- Black finish, 39"H, steel tubing construction, dual grip handles, axle mounted wheels



RETRACTABLE TEMPEST OUTDOOR STANCHION

☆ SPECIAL ORDER PRODUCT

- 15"W x 38-1/4"H, belt length 12-ft
- Yellow post with forest green retractable belt
- Post made of HDPE plastic



TOUCHLESS PRODUCTS

ON-THE-SPOT PRODUCTS



ON-THE-SPOT TOUCHLESS DISPENSER

PRODUCT # 516247

- Automated touchless hand sanitizer dispenser
- 1000 mL capacity
- For refills, utilize MSH 516246



ON-THE-SPOT COUNTERTOP STAND

PRODUCT # 516248

- Countertop component of On-the-Spot Automated dispenser (516247)



ON-THE-SPOT FLOOR STAND

PRODUCT # 516249

- Floor component of On-the-Spot Automated dispenser (516247)



ON-THE-SPOT HAND SANITIZER - 16-OZ PUMP

PRODUCT # 516244

- Gel-based hand sanitizer
- Kills over 99% of harmful germs
- Quick drying anti-bacterial formula that moisturizes hands



ON-THE-SPOT HAND SANITIZER - 8-OZ

PRODUCT # 516245

- Gel-based hand sanitizer
- Kills over 99% of harmful germs
- Quick drying anti-bacterial formula that moisturizes hands



ON-THE-SPOT HAND SANITIZER REFILL - 1.3-GAL

PRODUCT # 516246

- Use to refill On-the-Spot Hand Sanitizer Dispenser (516247)

BOTTLE FILLING STATIONS

ELKAY EZH2O BOTTLE FILLING STATION SURFACE MOUNT, FILTERED NON-REFRIGERATED STAINLESS



☆ SPECIAL ORDER PRODUCT

- Sensor activation (bottle filler) designed for easy use

TRASH CANS

60-LITER BRUSHED STAINLESS STEEL TOUCHLESS TRASH CAN WITH LID



PRODUCT # 565659

- Use with simplehuman® custom fit trash can liners, code P, also available at Lowe's (item # 703668)
- Great for commercial spaces: large capacity and an open lid make this an ideal choice for schools and offices
- Extra wide opening is ideal for high traffic areas



To view our full range of products, visit [LowesForPros.com](https://www.LowesForPros.com)



Touchless products like motion-activated soap dispensers and hands-free door pulls can **help freshly washed hands stay that way a bit longer.**

DOOR PULLS

SANIGRASP HYGENIC DOOR HANDLE

☆ SPECIAL ORDER PRODUCT



- 4" x 16" x 1-3/4" dia
- Eliminates the need to use your hand to open restroom door after washing your hands
- Mounting hardware included

STEPNPULL ALUMINUM 5"W PULL PLATE

PRODUCT # 955652



- 2-pack
- Gives user the option of pulling the door open with their foot instead of using their hand
- Helps reduce the spread of germs
- Perfect compliment to an automatic hand dryer - reduce or eliminate paper towel usage

PLUMBING

SLOAN MOTION FLUSH VALVE - FLUSH-O-METER SENSOR - POLISHED CHROME

PRODUCT # 832265



- High-efficiency and operates at 1.28 GPF
- (4) AA Duracell batteries included, average battery life good 6 years at 4,000 flushes per month
- ADA compliant, hands-free activation

SLOAN MOTION BATHROOM SINK FAUCET - POLISHED CHROME

PRODUCT # 1328470



- 4" centerset, cast brass spout
- Infrared sensor
- On-demand or metered activation

DRYERS & PAPER TOWEL DISPENSERS

TOUCHLESS BLACK TOWEL DISPENSER

☆ SPECIAL ORDER PRODUCT



- 11-1/4"W x 15"H x 9-1/4"D
- Automatic paper towel dispenser holds towel rolls of any leading brand up to 800 ft L x 8"W
- Adjustable settings for sheet length, time delay and paper saving mode
- Requires (4) D alkaline batteries (not included), for long term operation

STAINLESS STEEL TOUCHLESS OPERATION HAND DRYER

PRODUCT # 703867



- High Efficiency: Dry hands in under 20 seconds
- User-Friendly: Equipped with auto-sensor for touchless operation
- Quiet: Operates at 78 db

LIGHTS

LUTRON MAESTRO SINGLE-POLE WHITE 2-AMP OCCUPANCY/VACANCY MOTION SENSOR

PRODUCT # 2550692



- Automatically turns the lights on when you enter a room and off when you leave
- Optional Programming Mode: senses daylight so lights do not turn on when there is enough natural light in the room



MASONRY, BAGGED GOODS, REPAIR & UTILITIES

ELECTRICAL



50-FT HEAVY-DUTY EXTENSION CORD

⚠ SEE PAGE 35
PRODUCT # 378050



25-FT HEAVY-DUTY EXTENSION CORD

⚠ SEE PAGE 35
PRODUCT # 378025



100-FT JOBSITE EXTENSION CORD

⚠ SEE PAGE 35
PRODUCT # 378100



25-FT WORK LIGHT WITH METAL GUARD

⚠ SEE PAGE 35
PRODUCT # 378125



SURGE PROTECTOR POWER STRIP WITH USB CHARGER

⚠ SEE PAGE 35
PRODUCT # 378251

- Three outlets grounded, two USB ports
- 6-ft power cord
- 15A, 120V, 60 Hz



PRIME OUTLET POWER STRIP

⚠ SEE PAGE 35
PRODUCT # 378250

- Converts 1 outlet to 6
- Lighted On/Off master switch
- 3-ft cord with low profile angle plug

WOOD



2" X 4" X 8 FT WHITEWOOD STUD

PRODUCT # 7001

- Top Choice lumber is square, straight, solid, strong and has fewer splits, no wane and tighter knots
- Ideal for a wide range of uses



SEVERE WEATHER TREATED WOOD UNIVERSAL POST

PRODUCT # 202781

- 3-3/4" x 3-3/4" x 8 ft
- Pressure treated with a lifetime limited warranty against rot, decay and termite damage

BUCKETS

5-GALLON BLUE LOWE'S GENERAL BUCKET

PRODUCT # 954434



- Each pail is designed with reinforced rings around the top for added stability
- Uniform wall thickness for added strength when stacked



To view our full range of products, visit [LowesForPros.com](https://www.LowesForPros.com)



Don't forget the extra essentials you'll need to **make flexible spaces functional and secure** — including storage carts, extension cords and do-it-yourself materials like concrete blocks, sandbags and lumber to help support portable tents, signs or barricades.

STORAGE / ORGANIZATION

25"W X 38"H X 17"D PLASTIC FREESTANDING GARAGE CABINET



PRODUCT # 854804

- Assembled dimensions: 25.59"W x 38.58"H x 17.72"D
- Includes 2 adjustable shelves
- Load per shelf: 55 lbs equally distributed weight

48"W X 72"H X 20"D 5-TIER PLASTIC FREESTANDING SHELVING UNIT



PRODUCT # 1152800

- 200-lb weight capacity per shelf
- Holds up to (10) 27-gallon totes
- Adjustable feet to compensate for uneven surfaces

MASTER LOCK 2" STEEL KEYED PADLOCK



PRODUCT # 310450

- Indoor and outdoor padlock; maximum security padlock with Tough-Cut octagonal boron-carbide shackle is best used as a gate lock, shed lock, and storage locker lock
- Two padlocks, two keys; both keys open all locks

BUILDING SUPPLIES

STANDARD CORED CONCRETE BLOCK - NORMAL



PRODUCT # 10383

- Common: 8" x 8" x 16"; Actual: 7.625" x 7.625" x 15.625"
- Standard gray block provides strength and durability
- Fire-resistant

QUIKRETE 50-LB PLAY SAND



PRODUCT # 10392

- Ideal for molding and building
- Can be used in many landscape applications



HELPFUL HINT

Add sand to a bucket and insert a yardstick for an instant signpost.



MASONRY, BAGGED GOODS, REPAIR & UTILITIES CONT.

HARDWARE



8" BLACK NYLON CABLE TIES

⚠ SEE PAGE 35
PRODUCT # 757006

- 800-pack

11" BLACK NYLON CABLE TIES

⚠ SEE PAGE 35
PRODUCT # 375308

- 100-pack
- For outdoor or indoor use
- Contains UV inhibitors to extend life when used outdoors
- Strong nylon construction



14" WHITE NYLON CABLE TIES

⚠ SEE PAGE 35
PRODUCT # 375315

- 50-pack

36" WHITE NYLON CABLE TIES

⚠ SEE PAGE 35
PRODUCT # 375334

- 25-pack
- For outdoor or indoor use
- Contains UV inhibitors to extend life when used outdoors
- Strong nylon construction



FROST KING CORE SELF-SEALING PIPE INSULATION

PRODUCT # 1405743

- 1/2" wall thickness x 6 ft
- Fits 1/2-in copper pipe or 1/4-in iron pipe
- Prevents pipes from sweating and dripping
- Protects pipes against freezing

SHARPIE CHISEL TIP BLACK PERMANENT MARKER



PRODUCT # 395272

- Durable aluminum barrel and felt tip stand up to heavy use
- Excellent for marking corrugate, wood, metal, foil, stone, plastic, leather and more
- Marks on wet and oily surfaces

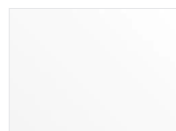
24" W X 48" L X .22" T CLEAR ACRYLIC SHEET



PRODUCT # 11288

- Excellent weatherability and insulating properties
- 10-year non-yellowing warranty
- Lightweight and easy to handle

24" X 4 FT MARKER BOARD WALL PANEL



PRODUCT # 61082

- Can be used as a dry erase board
- High gloss surface is easy to wipe clean
- Easy-to-use and install

3-FT WOOD YARDSTICK

PRODUCT # 22079



To view our full range of products, visit [LowesForPros.com](https://www.LowesForPros.com)



Preparing to reopen involves a lot of moving parts, both literally and figuratively. Keep a range of **cable ties and other versatile items** on hand to tackle whatever comes your way.

TAPE

BARRACUDA 1.88" IN X 54.6 YARD WEATHER PROOF DUCT TAPE

PRODUCT # 808501



- High adhesion with a strong hold
- Cutting edge technology utilizes advanced engineering process
- 5.5 mil composed of strong heat-bonded 4-layer construction
- Weatherproof and won't delaminate over time

DOLPHIN 3" X 60 YARD MASKING TAPE

PRODUCT # 808103



- Painter's grade standard masking tape suitable for most normal painting jobs
- Indoor removal recommended after 24 hours; 3 hours in direct sunlight

BARRACUDA 2" X 50 YARD INDUSTRIAL DUCT TAPE

PRODUCT # 808511



- Heat bonded 4-ply industrial duct tape
- 11.0 mil thickness
- Flexible, weatherproof and resistant to delamination
- Superior and tougher tape that tears easily

3/4" X 60 FT ROLL ELECTRICAL TAPE



PRODUCT # 808001

- 10-pack
- Standard grade electrical tape
- 7.0 mil thickness



LEAD TEST

DOLPHIN 2" X 60 YARD BLUE PAINTER'S TAPE

PRODUCT # 808120



- Easy removal to prevent drywall tearing or paint removal
- Indoor/outdoor use, no residue upon removal
- Use on glass, metal, vinyl, wood and plastic

3M LEAD CHECK SWAB DISPOSABLE LEAD TEST KIT

PRODUCT # 101651



- Detects lead on most surfaces within 30 seconds
- 3M LeadCheck swabs are EPA recognized
- Simple to use: just crush, shake and swab, RED MEANS LEAD™



TARPS, DROP CLOTHS, SHEETING & LINERS

TARPS & DROP CLOTHS

CINCHTITE C-INTITE TARP ZIPPER



PRODUCT # 1084251

- Self-adhesive zipper that creates an instant door
- Attaches to tarps and plastic sheeting
- Creates an enclosed, accessible work area

BLUE HAWK 8 FT X 10 FT POLYETHYLENE TARP



PRODUCT # 186798

- 8 ft x 10 ft, silver/brown reversible tarp
- Water, tear, mildew and UV resistant
- Contractor grade utility tarp

BLUE HAWK 12 FT X 16 FT PLASTIC TARP



PRODUCT # 187738

- 12 ft x 16 ft finished size, silver/brown color, 14 x 14 mesh
- Aluminum grommet at 18" interval, corners reinforced with corner patch
- All 4 edges are heat sealed and reinforced by PE rope in hem



9 FT X 12 FT CANVAS DROP CLOTH

PRODUCT # 824310

- Heavy canvas with anti-skid backing
- Protects against drips and spills



9 FT X 12 FT PLASTIC DROP CLOTH

PRODUCT # 824305

- 2 mil clear plastic
- Suitable for repeated use

12 FT X 100 FT PLASTIC SHEETING



PRODUCT # 730809

- 4 mil multi-purpose clear plastic sheeting
- 100% advanced multi-layer polyethylene
- Perfect as a vapor barrier



To view our full range of products, visit [LowesForPros.com](https://www.LowesForPros.com)



Traditional make-ready supplies, like drop cloths and trash bags, may find new uses as you **prepare your campus to reopen** this year. Be sure to order a few extras to meet unexpected needs or higher-than-usual demand.

LINERS

CONTRACTOR'S CHOICE CONTRACTOR 55-GALLON BLACK OUTDOOR PLASTIC CONSTRUCTION TRASH BAG



PRODUCT # 224273

- 40-pack
- Heavy duty black drum liner
- Easy-to-use flap tie closure
- 1 mil thick tear resistant trash bag

55-60-GALLON SUPREME OUTDOOR LOW DENSITY TRASH BAGS



PRODUCT # 545057

- 100-pack
- 2.0 mil low density, 38" x 58"
- Black with flat seal bottom
- High strength, flat packed in dispenser boxes

MOXIE 39-GALLON BLACK OUTDOOR PLASTIC LAWN AND LEAF TRASH BAG



PRODUCT # 1217526

- 40-pack
- Heavy duty outdoor bag with drawstring closure
- Flex Defense
- Black

55-60-GALLON 70% RECYCLED MATERIAL LINERS



PRODUCT # 545073

- 100-pack
- 1.3 mil equivalent "Green" trash bags
- Consists of 100% post-consumer waste resins
- 38" x 58"



HELPFUL HINT

When more permanent solutions are unavailable, versatile supplies like tarps and plastic sheeting can be hung from ceilings to serve as physical barriers.



PORTABLE TENTS & MISCELLANEOUS ITEMS

PORTABLE TENTS



20 FT X 10 FT WHITE ENCLOSED CANOPY WITH WINDOWS

★ SPECIAL ORDER PRODUCT

- 9 ft 9" height
- 8 legs/poles
- Unassembled, zippered roll-up



Z-SHADE 10-FT L SQUARE BLUE POP-UP CANOPY

PRODUCT # 806328

- Slant leg frame with shade coverage
- Simple push-pin height adjustments
- Instant set up in just minutes, no tools required

FOLDING TABLES & CHAIRS

INDOOR GRAY METAL PADDED VINYL STANDARD FOLDING CHAIR



PRODUCT # 808605

- Folds up tight and compact for easy storage
- Use of two cross braces and tube-in-tube reinforced frame
- Easy to clean and durable steel frame with powder-coat finish

INDOOR BLACK METAL SOLID STANDARD FOLDING CHAIR



PRODUCT # 1085847

- Folds up tight and compact for easy storage
- Use of two cross braces and tube-in-tube reinforced frame
- Easy to clean and durable steel frame with powder-coat finish

30" X 72" INDOOR RECTANGLE RESIN GRAY FOLDING TABLE



PRODUCT # 1085853

- Moisture-proof high-density resin material that enables strength and durability against the weather
- Resin table top - easy-to-clean surface
- Easy to carry with attached strap



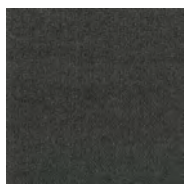
To view our full range of products, visit [LowesForPros.com](https://www.LowesForPros.com)



Portable tents can provide added **space and flexibility** as schools adapt to accommodate social distancing guidelines.

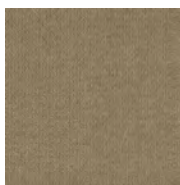
CARPET TILE

PEBBLE PATH 15-PACK 24" PATTERN PEEL-AND-STICK CARPET TILE



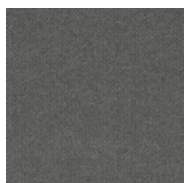
BLACK ICE

PRODUCT # 1499921



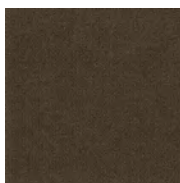
CHESTNUT

PRODUCT # 1068458



SKY GREY

PRODUCT # 749412



MOCHA

PRODUCT # 749411

- Natural Touch™ fiber – 100% PET fiber made from purified recycled bottles
- 5-Year Warranty: Dura-Lock™ fiber locking system, creating a lightweight and incredibly resilient surface guaranteed to not fray, zipper or unravel even when cut to fit
- The only tools needed for installation are a measuring tape, chalk line, utility knife and a contractor square

SHAW 12-PACK 9" TEXTURED PEEL-AND-STICK CARPET TILE



BUFF TONE

PRODUCT # 1963392



MIRAGE

PRODUCT # 1963390

- 9" x 36" DIY-friendly peel- and-stick carpet tiles
- Pop it on top of any hard surface floor
- Perfect for a custom area rug or wall-to-wall install



HELPFUL HINT

Install peel-and-stick carpet tiles over slick floors to help reduce the risk of slip-and-fall accidents in temporary areas.

MOBILE HANDWASHING STATION



MOBILE HAND WASH SINK - STAINLESS STEEL

★ SPECIAL ORDER PRODUCT

- 26"W x 36"H x 24"D, 285-lbs
- 5-gallon capacity
- Hot & cold



PORTABLE A/C UNITS

COMFORT-AIRE PORTABLE A/C UNITS



COMFORT-AIRE PORTABLE AIR CONDITIONER

PRODUCT # 230908 - 8,000 BTU
PRODUCT # 230910 - 10,000 BTU
(CALL TO ORDER)

- Single hose (48") for easy installation
- Electronic controls with auto restart and 24-hour timer
- 1-year express warranty
- 14"W x 27.7"H x 13.6"D



COMFORT-AIRE PORTABLE AIR CONDITIONER

PRODUCT # 230915 - 12,000 BTU
(CALL TO ORDER)

- 8.9 EER rating, 12A
- Electronic remote or smartphone controls with auto restart
- 48" single hose for fast installation
- R-410A refrigerant
- 1-year express warranty
- 18-5/16"W x 30-1/8"H x 15-5/8"D
- MFG# PS-121C

COMFORT-AIRE WINDOW AIR CONDITIONERS



PRODUCT # 230605 - 5,000 BTU
(CALL TO ORDER)

- 11.3 EER, 4.0A
- Electro-mechanical 7-position control
- 1-year express warranty
- 16"W x 12"H x 15-7/16"D
- MFG# RG-51Q



PRODUCT # 230604 - 5,000 BTU
PRODUCT # 230606 - 6,000 BTU
(CALL TO ORDER)

- 3-speed cool/fan
- Full remote control
- 1-year express warranty



PRODUCT # 230608 - 8,000 BTU
PRODUCT # 230610 - 10,000 BTU
PRODUCT # 230612 - 12,000 BTU
(CALL TO ORDER)

- Electronic controls with auto-restart
- Energy-saver, auto dehumidification and sleep modes
- 1-year express warranty



PRODUCT # 230615 - 15,000 BTU
(CALL TO ORDER)

- 12.0 EER, 11.5A
- Electronic controls with auto-restart
- 1-year express warranty
- 23-5/8"W x 17-3/16"H x 25-1/2"D
- MFG# RADS-151Q

AIR PURIFIERS



FILTRETE ROOM AIR PURIFIERS 4-SPEED 370-SQ FT TRUE HEPA AIR PURIFIER

PRODUCT # 1150095

- For rooms up to 370 sq ft
- Includes a true HEPA Filter



To view our full range of products, visit [LowesForPros.com](https://www.LowesForPros.com)

06

3 WAYS TO ORDER

STOCK UP FOR A FRESH START



Go to **LowesForPros.com** to shop our full range of products



Call our Lowe's Pro Solution Center at **888-563-3450** to talk to a representative



Email us at **LowesPro@supplyhq.com**

WE'RE HERE TO HELP!

Our Back to School Guide features select products and helpful hints for reopening. If you're unable to find the specific product you're looking for, LowesForPros.com offers many more options. Whether you prefer to shop online, pick up the phone or email your order, we're here to help. When emailing, be sure to include your name, contact information, item numbers (if known), requested quantities and product descriptions — along with your preference to pick up at your local store or have the product delivered. We want to help you save time, save money and get back to what you do best — **start each year with a clean slate.**

ASSOCIATE ORDERING INSTRUCTIONS

Call or email the Lowe's Pro Solution Center with the following information:

1. Customer account number and contact information
2. Your local store number
3. Delivery option and requested date
4. Item numbers, descriptions and quantities
5. Method of payment

LOWE'S COOPERATIVE CONTRACTS

OMNIA Partners Contract Number: 192006

- OMNIA Partners Rebate Tiers:**
Must link tender to your LowesForPros.com account to receive rebates
- Pro ID F1A0135C8E
 - \$10,000 - \$24,999 – 2% rebate on all sales (less returns)
 - \$25,000 - \$49,999 – 4% rebate on all sales (less returns)
 - \$50,000 or more – 7% rebate on all sales (less returns)

E&I Cooperative Services Contract Number: CNR01375

- Walk-In Solution – 7% discount when scanning a key fob
- On-Line Solution – 7-20% discount on LowesForPros.com

NASPO Valuepoint Master Contract Number: MA087

- Walk-In Solution - 7% discount when scanning key fob
- State of Alaska – Contract Number 2017-WIBS-0001
- State of Arizona – Contract Number ADSP018-179806
- State of Arkansas – Contract Number MA087
- State of Hawaii – Contract Number 18-04
- State of Iowa – Contract Number MA 17603
- State of Kansas – Contract Number 42374
- State of Kentucky – Contract Number MA 758 18000000035
- State of Maine – Contract Number MA170518*133
- State of Massachusetts – Contract Number FAC105
- State of Michigan – Contract Number 190000000782
- State of Minnesota – Contract Number 124794
- State of Mississippi – Contract Number MA087
- State of Missouri – Contract Number 83005641
- State of Montana – Contract Number MA087
- State of Nevada – Contract Number 8575
- State of New Hampshire – Contract Number 8000949
- State of New Jersey – Contract Number 18-Fleet-00235
- State of New York – Contract Number PC67929
- State of North Carolina – Contract Number 150A
- State of Ohio – Contract Number RS900318 GPC012
- State of Oklahoma – Contract Number SW820
- State of Oregon – Contract Number 6490
- State of Pennsylvania – Contract Number 4400016354
- State of South Carolina – Contract Number 4400017230
- State of South Dakota – Contract Number 17090
- State of Utah – Contract Number MA087
- State of Washington – Contract Number 2517

State of Georgia Contract Number 99999-001-SPD0000170-000

© 2020 Lowe's. LOWE'S and the Gable Mansard Design are registered trademarks of LF, LLC. All rights reserved.
Product availability may vary by market.



WARNING

These products contain chemicals which are known to the state of California to cause cancer, birth defects, or other reproductive harm. For more information, go to www.P65warnings.ca.gov.



LOWE'S 4PROS

LowesForPros.com | 888-563-3450

A photograph of a coach with a beard and a blue cap talking to a group of female soccer players on a field at night. The players are wearing white jerseys with blue numbers and a blue ram logo on the back. The coach is wearing a blue jacket with "TCR" on it. The background shows a stadium with red seats and a green field.

**OPEN SAFELY,
TOGETHER.**