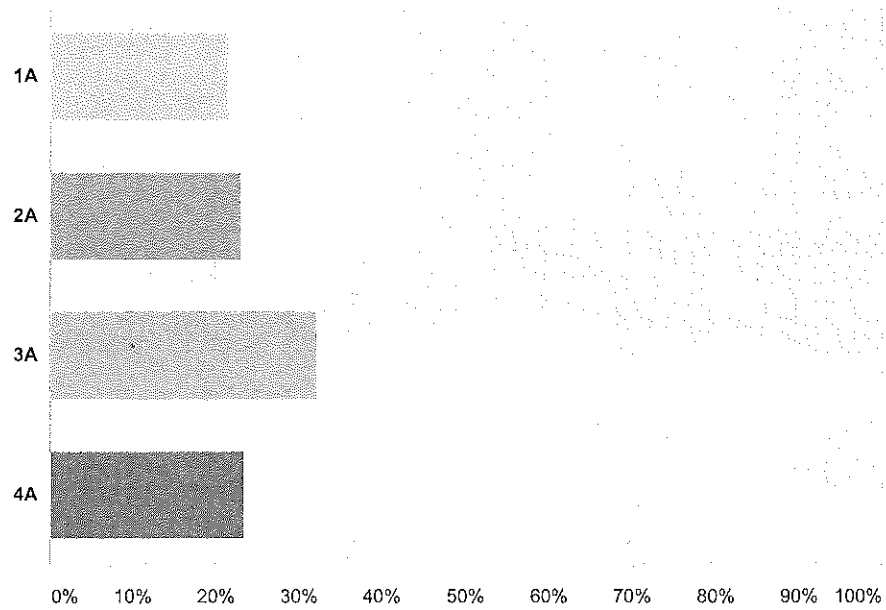


Q1 What is your school's classification?

Answered: 287 Skipped: 3

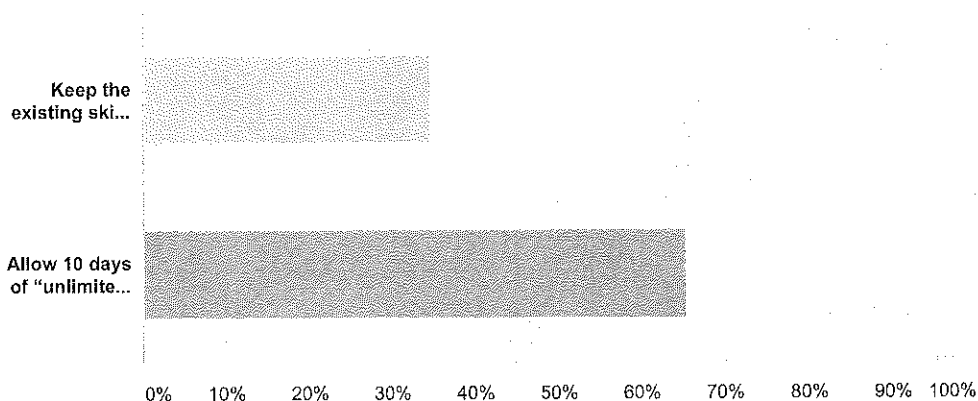


Answer Choices	Responses	
1A	21.60%	62
2A	23.00%	66
3A	32.06%	92
4A	23.34%	67
Total		287

2014 Football Coaches Survey

Q2 Which Option Regarding Skill Development do you Prefer?

Answered: 289 Skipped: 1



Answer Choices

Responses

Keep the existing skill development policy in place: 21-player limitation would remain in place; Sessions can occur during the entire school year (excluding dead periods)

34.60%

100

Allow 10 days of "unlimited number" skill development sessions immediately prior to the last 5 days of the school year; during this period: The 21-player limitation would be lifted; The no "body to body" contact rule will remain in place; One session per day, not to exceed time limit for regular season practices; No skill development sessions allowed prior to this 10-day period in May

65.40%

189

Total

289

2014 Football Coaches Survey

Q3 Do you have any other comments, questions, or concerns?

Answered: 85 Skipped: 205